

McClannahan Summit

Camellia Premier
LOT 93

580 Arthur St. Umatilla, OR 97882

3 Bedrooms

2 Bathrooms

1,249 Sq. Ft.

2 Car Garage

334,997

UNDER CONSTRUCTION



U - CRAFTSMAN ELEVATION



At 1,249 square feet, the Camellia is an approachable home that gives buyers thoughtful design and comfortable living without extra complexity. The open kitchen and great room invite easy daily connection, while three bedrooms offer room for rest, guests, or a small office. With its efficient layout and manageable footprint, the Camellia keeps everyday life feeling simple and purposeful. Designed with affordability and ease in mind, it's a solid foundation where routines come naturally and a sense of home takes shape around the moments that matter.

MonteVista
HOMES

541-833-9119

In a continual effort to improve our product, MonteVista Homes reserves the right to change product design, features, materials, floor plans, specifications, prices and terms without prior notice. Square footage stated or implied are approximate. Images may be representative of future home and show what's possible not what's included. Seller is a licensed real estate broker in the State of Oregon. CCB#203709



McClannahan Summit

Camellia Premier
LOT 93

580 Arthur St. Umatilla, OR 97882

3 Bedrooms

2 Bathrooms

1,249 Sq. Ft.

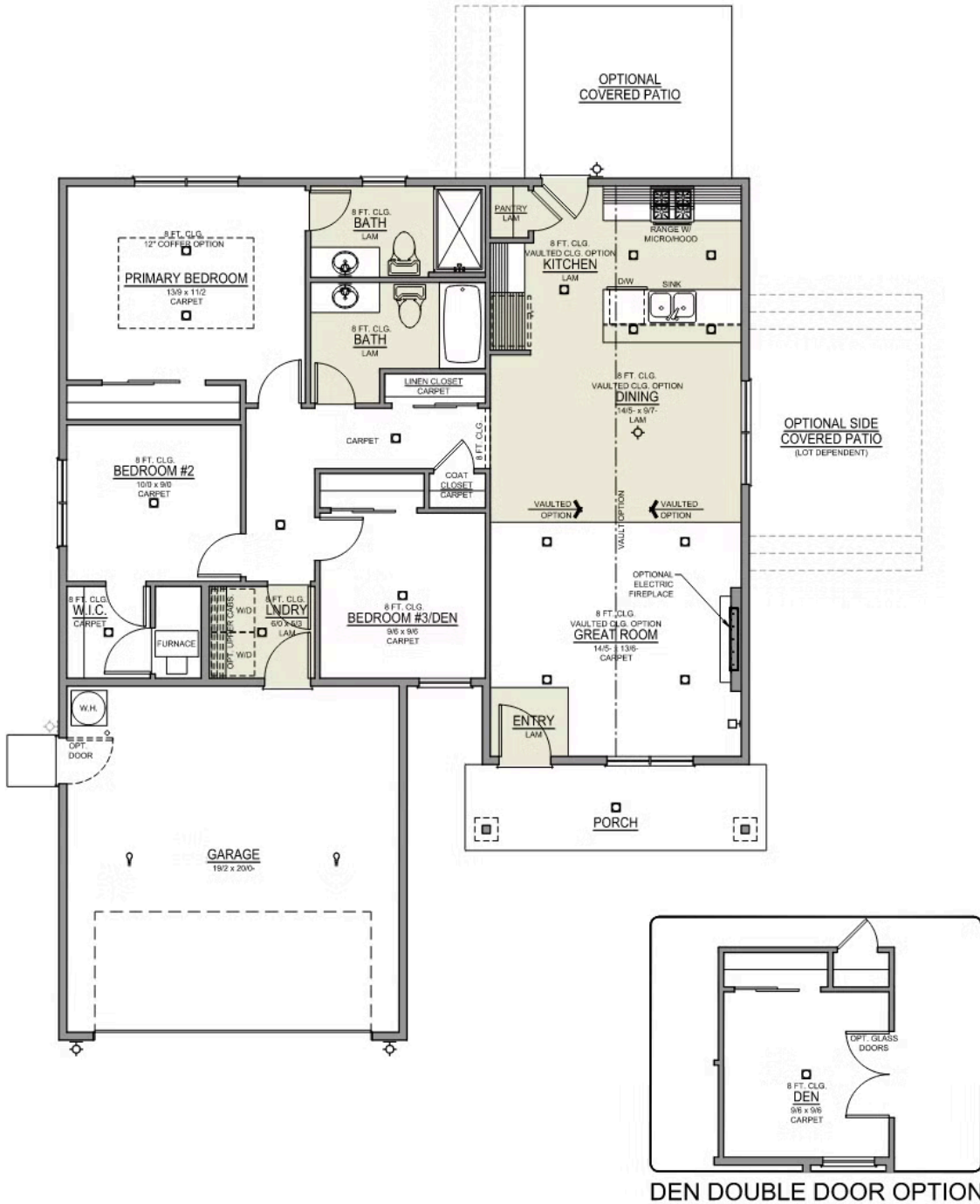
2 Car Garage

334,997

Camellia 2-Car

1,249 Sq. Ft.

3 Bedroom, 2 Bath



McClannahan Summit

OPTIONS

Camellia Premier
LOT 93


580 Arthur St. Umatilla, OR 97882

 3 Bedrooms

 2 Bathrooms

 1,249 Sq. Ft.

 2 Car Garage

 334,997

- Interior Color Package: "Granite Shoreline". Painted Cabinets (All cabinets in house MUST be selected as "PAINTED")
- Exterior Color Package: Timberline Meadows
- Light Fixtures: Acadia
- Doors: Hardware Standard. "Cove" knobs / "Amador" front door handle.
- Bathroom: Shower Enclosure(s) Glass Color Choice
- Electrical: Tech Package Pre Wire - Includes Panel, 110 outlet, 1 Dual Wall Plate (Coax & Ethernet) in Great Room
- Ceilings: (Premier Series Only) Vault in Great Room and Coffered Ceiling in Primary Bedroom.
- Kitchen: 30" Cabinets. PAINTED Kitchen & Bathroom Cabinets.
- Cabinets: Specify Color of Knobs and Pulls
- Counters: Quartz Counters and Backsplash in Kitchen
- Counters: Quartz Counters and Backsplash in Guest Bath
- Counters: Quartz Counters and Backsplash in Primary Bath
- Kitchen: Pendant Lights over Kitchen Island - In place of recessed LED
- Fencing: Cedar, Dog-eared, 6' tall. (50 ft Min. Order)
- Fencing: 4' wide Walk Gate. Cedar, Dog-eared, 6' tall.
- Flooring: Great Room - Wood Laminate (Casita Court)
- Flooring: Hallway Down - Wood Laminate (Casita Court)
- Garage: Garage Door Opener
- Garage: Garage Door Opener Wireless Keypad
- HVAC: Air Conditioner - PreWire not previously selected (Not available for Duets)
- Fireplace: Electric Fireplace - Drywall Only w/ Mantle
- Landscape: Backyard Landscaping. Up to a 60-ft wide lot
- Kitchen or Laundry Sink: Upgrade Faucet to Moen Arbor. SPECIFY Location(s) and Color (Kitchen or Laundry, and Black or Spot Resistant Stainless).
- Retaining Wall to be built with: Manor stone block, Gravel, and drain pipe perforated with sock. 42" retaining wall.

MonteVista
HOMES

541-833-9119

In a continual effort to improve our product, MonteVista Homes reserves the right to change product design, features, materials, floor plans, specifications, prices and terms without prior notice. Square footage stated or implied are approximate. Images may be representative of future home and show what's possible not what's included. Seller is a licensed real estate broker in the State of Oregon. CCB#203709

