

McClannahan Summit

Charity Premier
LOT 76

593 Taft St. Umatilla, OR 97882

 3 Bedrooms  2 Bathrooms  1,892 Sq. Ft.  2 Car Garage  489,997

UNDER CONSTRUCTION



V - FARMHOUSE



- Quartz Countertops throughout the home
- Free-Standing Soaking Tub
- Office, Study, or School Room

- Great Room with Fireplace
- Corner Kitchen Pantry
- Laundry/Mud room access from Garage

MonteVista
HOMES

541-833-9119

In a continual effort to improve our product, MonteVista Homes reserves the right to change product design, features, materials, floor plans, specifications, prices and terms without prior notice. Square footage stated or implied are approximate. Images may be representative of future home and show what's possible not what's included. Seller is a licensed real estate broker in the State of Oregon. CCB#203709



Charity Premier
LOT 76

593 Taft St. Umatilla, OR 97882

 3 Bedrooms

 2 Bathrooms

 1,892 Sq. Ft.

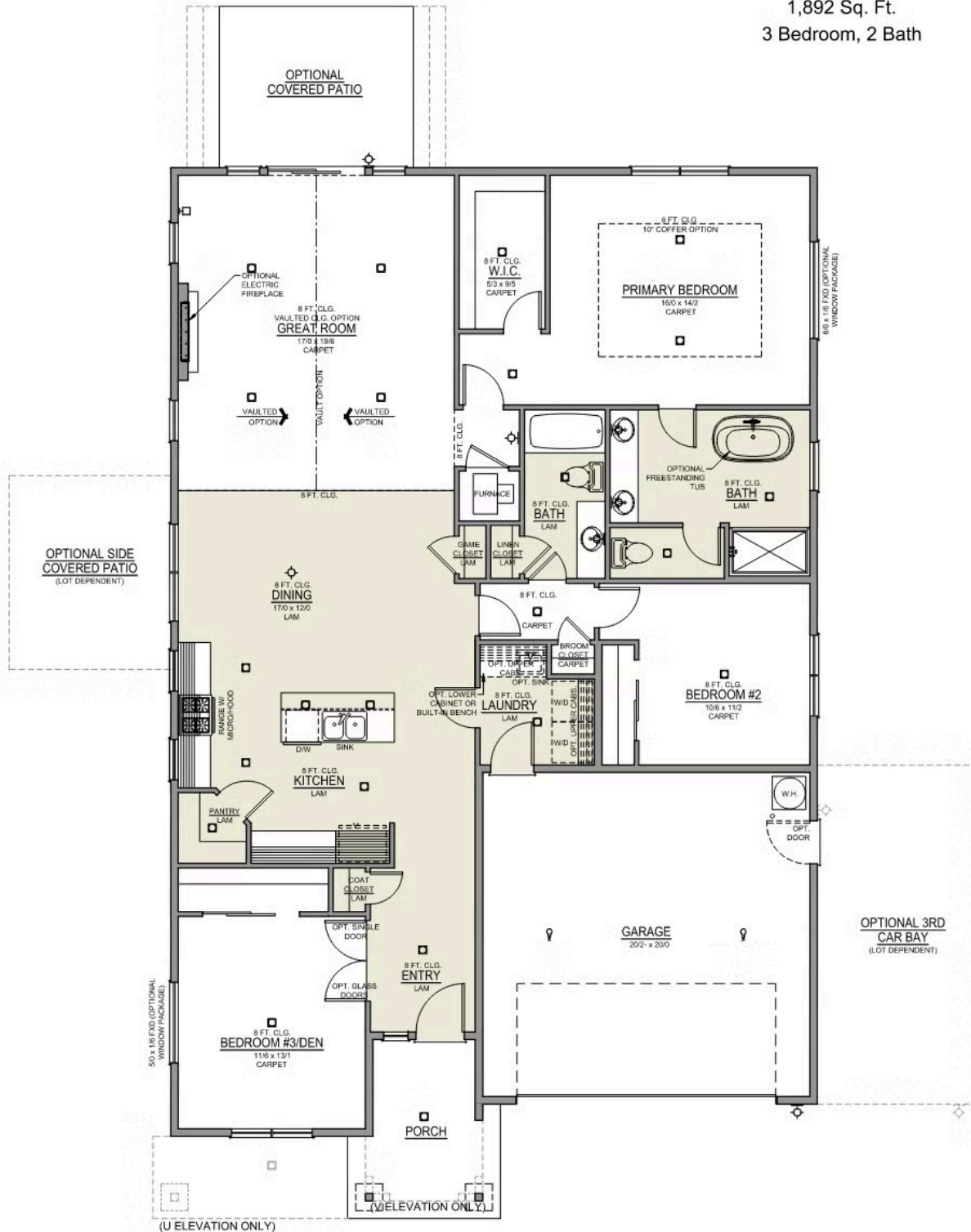
 2 Car Garage

 489,997

Charity 2-Car

1,892 Sq. Ft.

3 Bedroom, 2 Bath



McClannahan Summit

Charity Premier
LOT 76

593 Taft St. Umatilla, OR 97882

 3 Bedrooms

 2 Bathrooms

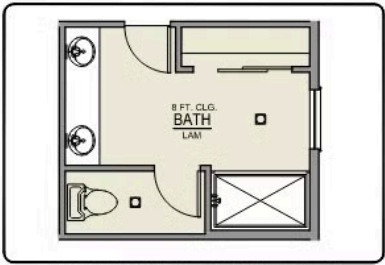
 1,892 Sq. Ft.

 2 Car Garage

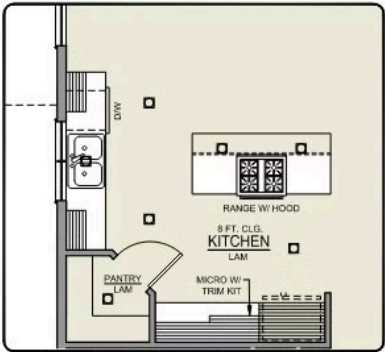
 489,997

Charity 2-Car

1,892 Sq. Ft.
3 Bedroom, 2 Bath



PRIMARY BATH LINEN CLOSET OPTION



ISLAND HOOD OPTION

McClannahan Summit

OPTIONS

Charity Premier
LOT 76

593 Taft St. Umatilla, OR 97882

 3 Bedrooms  2 Bathrooms  1,892 Sq. Ft.  2 Car Garage  489,997

- Interior Color Package: "Mountain Vogue". Includes Stained Cabinets.
- Interior Walls/Trim: Walls - "Snowbound" , Trim - "Pure White"
- Exterior Color Package: Rustic Woods
- Light Fixtures: Acadia
- Doors: Standard Hardware. Cove knobs / Amador front door handle.
- Bathroom: Upgrade finishes to BLACK. Soaker Tub INCLUDED. All bathrooms. (Plumbing Fixtures, bath accessories and shower door hardware)
- Bathroom: Every Glass Shower Enclosure - Color Choice - "Clear Glass".
- Electrical: Tech Package Pre Wire - Includes Panel, 110 outlet, 1 Dual Wall Plate (Coax & Ethernet) in Great Room
- Windows Package: Optional Windows
- Ceilings: (Premier Series Only) Vault in Great Room and Coffered Ceiling in Primary Bedroom.
- Kitchen: Island Range/Hood. 30" STAINED Cabinets. All Kitchen & Bath Cabs Stained. Sliding Window over the sink. (Premier/Origin Series)
- Laundry Lowers: Add Lower Cabs STAINED. With Quartz Top and Backsplash - No Sink
- Cabinets: Specify Color of Knobs and Pulls
- Counters: Quartz Counters and Backsplash (6") in Kitchen
- Counters: Quartz Counters and Backsplash in Guest Bath(s)
- Counters: Quartz Counters and Backsplash in Primary Bath
- Exterior Covered Patio: Rear - 12x10
- Electrical: Surface Mount LEDs. Add 2 for 4 total + Dimmer switch. For Primary Bedroom (N/A for Florence).
- Flooring: Great Room - Wood Laminate (Casita Court)
- Flooring: Hallway Down & Linen Closets - Wood Laminate (Casita Court)
- Garage: Garage Door Opener
- Garage: Garage Door Opener Wireless Keypad
- HVAC: System - Air Conditioner (Includes PreWire). *Not available for Duets.
- Fireplace: Electric Fireplace - Drywall Only w/ Mantle
- Fireplace: Add Shiplap to Electric Fireplace
- Kitchen: Farm Sink - Stainless Steel Single Bowl **REQUIRES QUARTZ COUNTERTOPS**
- Kitchen or Laundry: Upgrade Faucet to Moen Arbor. SPECIFY Location(s) and Color. (Kitchen or Laundry. Black or Spot Resistant Stainless)
- Bathroom: Freestanding Soaker Tub

MonteVista
HOMES

541-833-9119

In a continual effort to improve our product, MonteVista Homes reserves the right to change product design, features, materials, floor plans, specifications, prices and terms without prior notice. Square footage stated or implied are approximate. Images may be representative of future home and show what's possible not what's included. Seller is a licensed real estate broker in the State of Oregon. CCB#203709

