

# McClannahan Summit

Charity Premier  
LOT 85

515 Arthur St. Umatilla, OR 97882

 3 Bedrooms  2 Bathrooms  1,892 Sq. Ft.  2 Car Garage  389,900

MOVE-IN READY



U - CRAFTSMAN



- Quartz Countertops throughout the home
- Free-Standing Soaking Tub
- Office, Study, or School Room

- Great Room with Gas Fireplace
- Corner Kitchen Pantry
- Laundry/Mud room access from Garage

MonteVista  
HOMES

541-833-9119

*In a continual effort to improve our product, MonteVista Homes reserves the right to change product design, features, materials, floor plans, specifications, prices and terms without prior notice. Square footage stated or implied are approximate. Images may be representative of future home and show what's possible not what's included. Seller is a licensed real estate broker in the State of Oregon. CCB#203709*



McClannahan Summit

Charity Premier  
LOT 85

515 Arthur St. Umatilla, OR 97882

3 Bedrooms

2 Bathrooms

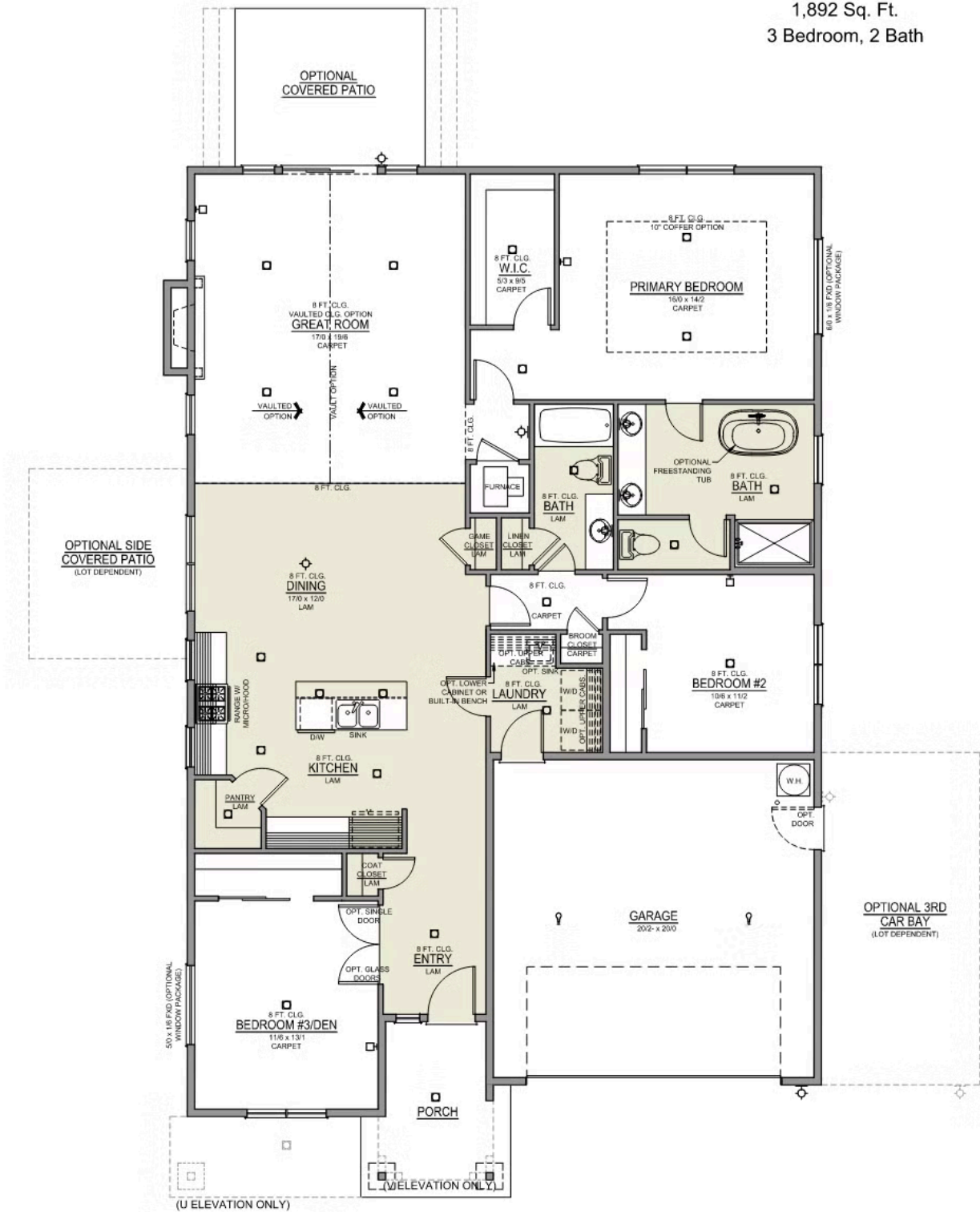
1,892 Sq. Ft.

2 Car Garage

389,900

Charity 2-Car

1,892 Sq. Ft.  
3 Bedroom, 2 Bath




# McClannahan Summit

Charity Premier  
LOT 85

515 Arthur St. Umatilla, OR 97882

 3 Bedrooms

 2 Bathrooms

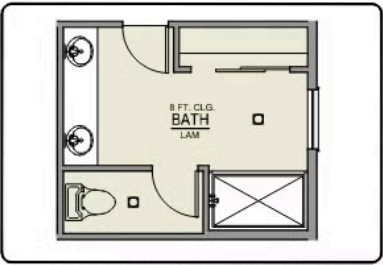
 1,892 Sq. Ft.

 2 Car Garage

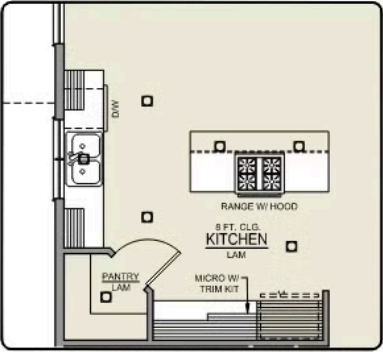
 389,900

Charity 2-Car

1,892 Sq. Ft.  
3 Bedroom, 2 Bath



PRIMARY BATH LINEN  
CLOSET OPTION



ISLAND HOOD OPTION

# McClannahan Summit

## OPTIONS

Charity Premier  
LOT 85

515 Arthur St. Umatilla, OR 97882

 3 Bedrooms  2 Bathrooms  1,892 Sq. Ft.  2 Car Garage  389,900

- Interior Color Package: "Mountain Vogue". Painted Cabinets (All cabinets in house MUST be selected as "PAINTED")
- Exterior Color Package: Timberline Meadows
- Light Fixtures: Acadia
- Doors: Hardware Standard. "Cove" knobs / "Amador" front door handle.
- Bathroom: Upgrade finishes to BLACK. Soaker Tub INCLUDED. All bathrooms. (Plumbing Fixtures, bath accessories and shower door hardware)
- Bathroom: Shower Enclosure(s) Glass Color Choice
- Corner Lot Exterior Package: Includes Window trim on Corner Side, Flatwork and Corner Lot Landscaping
- Electrical: Tech Package Pre Wire - Includes Panel, 110 outlet, 1 Dual Wall Plate (Coax & Ethernet) in Great Room
- Windows Package: Optional Windows
- Ceilings: (Premier Series Only) Vault in Great Room and Coffered Ceiling in Primary Bedroom.
- Kitchen: Island Range and Hood. 30" Stained Cabinets. Sliding Window over the sink. (Premier & Origin Series Only)
- Appliances: Refrigerator - Side-By-Side, Water / Ice
- Cabinets: Color of Knobs and Pulls
- Counters: Quartz Counters and Backsplash in Kitchen
- Counters: Quartz Counters and Backsplash in Guest Bath
- Counters: Quartz Counters and Backsplash in Primary Bath
- Exterior Covered Patio: Rear - 12x10
- Electrical: Recessed LEDs. Add 2 for 4 total+ Dimmer in Primary Bedroom.
- Flooring: Hallway Down - Wood Laminate (Casita Court)
- Garage: Garage Door Opener
- Garage: Garage Door Opener Wireless Keypad
- HVAC: Air Conditioner - PreWire not previously selected (Not available for Duets)
- Fireplace: Gas Fireplace (Direct Vent) with Mantel and Stone Surround
- Landscape: Backyard Landscaping. Up to a 60-ft wide lot
- Kitchen: Farm Sink - Stainless Steel Single Bowl  
\*\*REQUIRES QUARTZ COUNTERTOPS\*\*
- Kitchen or Laundry Sink: Upgrade Faucet to Moen Arbor. SPECIFY - Location(s) and Color (Black or SRS).
- Bathroom: Freestanding Soaker Tub

MonteVista  
HOMES

541-833-9119

*In a continual effort to improve our product, MonteVista Homes reserves the right to change product design, features, materials, floor plans, specifications, prices and terms without prior notice. Square footage stated or implied are approximate. Images may be representative of future home and show what's possible not what's included. Seller is a licensed real estate broker in the State of Oregon. CCB#203709*

