



McClannahan Summit

Charlotte Premier
LOT 87

483 Arthur St. Umatilla, OR 97882

 4 Bedrooms  2 Bathrooms  1,701 Sq. Ft.  2 Car Garage  375,900

UNDER CONSTRUCTION



U - CRAFTSMAN 2 CAR



[Limited-Time 4.99% Interest Rate Incentive*](#)

**See agent for details*

- Kitchen Island with Sink
- Quartz Countertops throughout Home
- Open Great Room with Electric Fireplace
- Kitchen Pantry
- Stainless Steel Kitchen Appliances
- Laundry Room

MonteVista
HOMES

541-833-9119

In a continual effort to improve our product, MonteVista Homes reserves the right to change product design, features, materials, floor plans, specifications, prices and terms without prior notice. Square footage stated or implied are approximate. Images may be representative of future home and show what's possible not what's included. Seller is a licensed real estate broker in the State of Oregon. CCB#203709



McClannahan Summit

Charlotte Premier
LOT 87

483 Arthur St. Umatilla, OR 97882

4 Bedrooms

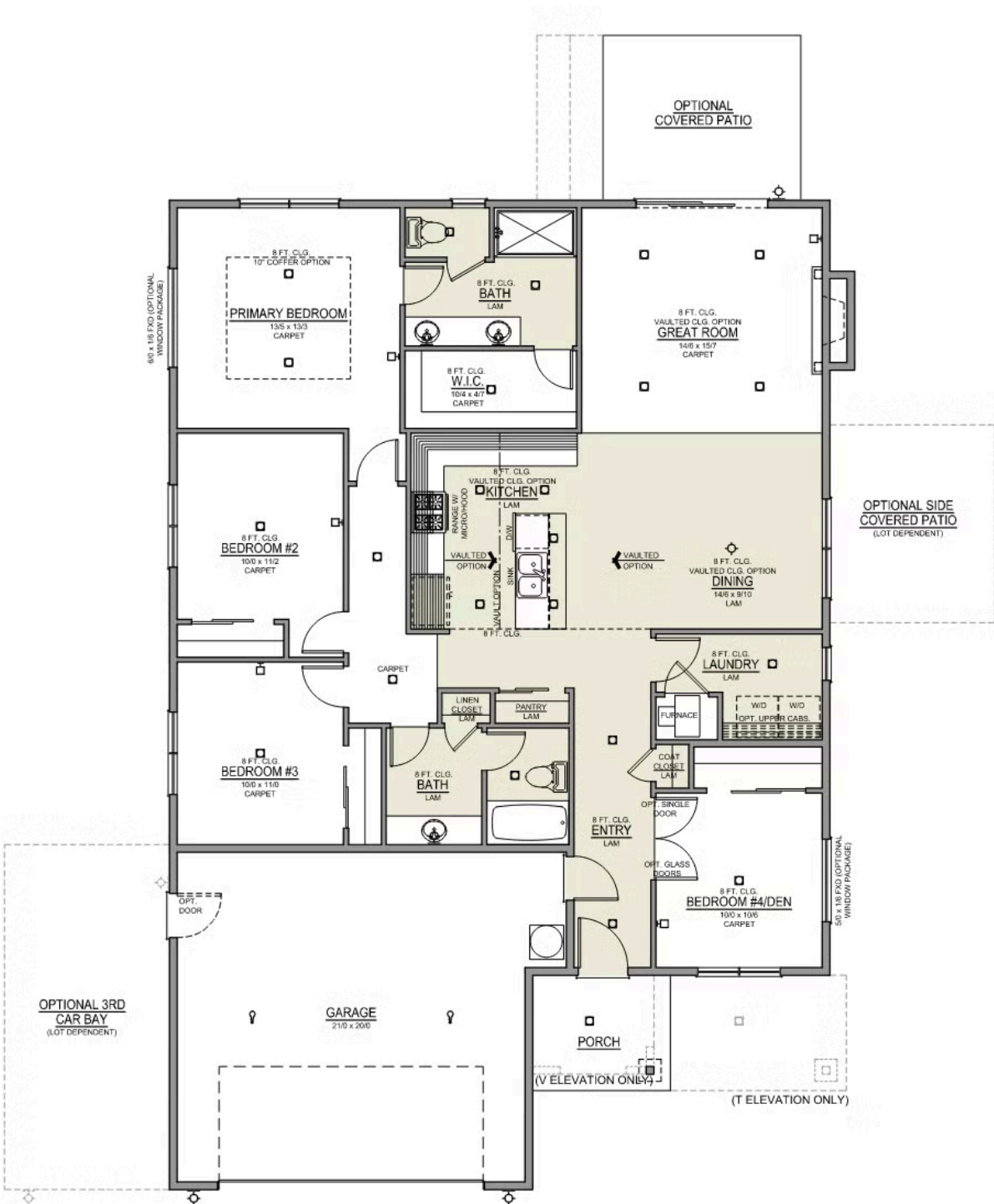
2 Bathrooms

1,701 Sq. Ft.

2 Car Garage

375,900

Charlotte 2-Car
1,701 Sq. Ft.
4 Bedroom, 2 Bath








McClannahan Summit

OPTIONS

Charlotte Premier
LOT 87

483 Arthur St. Umatilla, OR 97882

 4 Bedrooms  2 Bathrooms  1,701 Sq. Ft.  2 Car Garage  375,900

- Interior Color Package: "Haven Valley". Painted Cabinets (All cabinets in house MUST be selected as "PAINTED")
- Exterior Color Package: Deschutes Frost
- Light Fixtures: Acadia
- Doors: Hardware Standard. "Cove" knobs / "Amador" front door handle.
- Bathroom: Shower Enclosure(s) Glass Color Choice
- Electrical: Tech Package Pre Wire - Includes Panel, 110 outlet, 1 Dual Wall Plate (Coax & Ethernet) in Great Room
- Ceilings: (Premier Series Only) Vault in Great Room and Coffered Ceiling in Primary Bedroom.
- Kitchen: 30" Cabinets. PAINTED Kitchen & Bathroom Cabinets.
- Cabinets: Color of Knobs and Pulls
- Counters: Quartz Counters and Backsplash in Kitchen
- Counters: Quartz Counters and Backsplash in Guest Bath
- Counters: Quartz Counters and Backsplash in Primary Bath
- Exterior Covered Patio: Rear - 12x10
- Kitchen: Pendant Lights over Kitchen Island - In place of recessed LED
- Electrical: Recessed LEDs. Add 2 for 4 total+ Dimmer in Primary Bedroom.
- Flooring: Hallway Down - Wood Laminate (Casita Court)
- Garage: Garage Door Opener
- Garage: Garage Door Opener Wireless Keypad
- HVAC: Air Conditioner - PreWire not previously selected (Not available for Duets)
- Fireplace: Gas Fireplace (Direct Vent) with Mantel and Stone Surround
- Kitchen: Farm Sink - Stainless Steel Single Bowl
REQUIRES QUARTZ COUNTERTOPS
- Kitchen or Laundry Sink: Upgrade Faucet to Moen Arbor. SPECIFY - Location(s) and Color (Black or SRS).

MonteVista
HOMES

541-833-9119

In a continual effort to improve our product, MonteVista Homes reserves the right to change product design, features, materials, floor plans, specifications, prices and terms without prior notice. Square footage stated or implied are approximate. Images may be representative of future home and show what's possible not what's included. Seller is a licensed real estate broker in the State of Oregon. CCB#203709

