

McClannahan Summit

Charlotte
LOT 94

596 Arthur St. Umatilla, OR 97882

4 Bedrooms

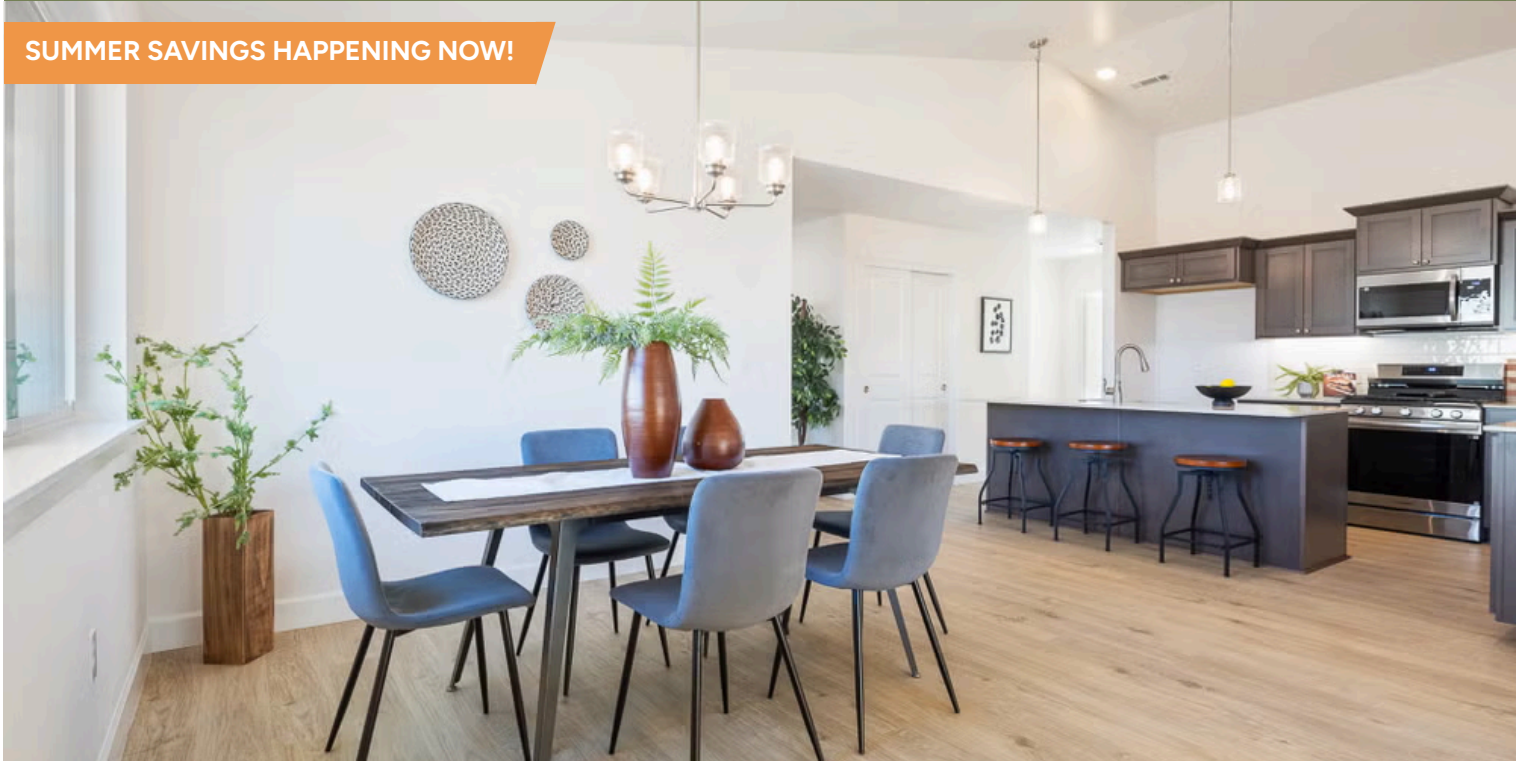
2 Bathrooms

1,701 Sq. Ft.

2 Car Garage

379,997

SUMMER SAVINGS HAPPENING NOW!



V - FARMHOUSE ELEVATION



The Charlotte delivers a great combination of space and efficiency, offering four bedrooms in 1,701 square feet. The open kitchen, dining area, and great room form the home's central hub, inviting people to connect naturally throughout the day. Well-proportioned bedrooms give everyone room to spread out for rest, work, or hobbies without feeling closed in, and the layout lives larger than its footprint suggests.

MonteVista
HOMES

541-833-9119

In a continual effort to improve our product, MonteVista Homes reserves the right to change product design, features, materials, floor plans, specifications, prices and terms without prior notice. Square footage stated or implied are approximate. Images may be representative of future home and show what's possible not what's included. Seller is a licensed real estate broker in the State of Oregon. CCB#203709



McClannahan Summit

Charlotte
LOT 94

596 Arthur St. Umatilla, OR 97882

🛏 4 Bedrooms

🚿 2 Bathrooms

🏠 1,701 Sq. Ft.

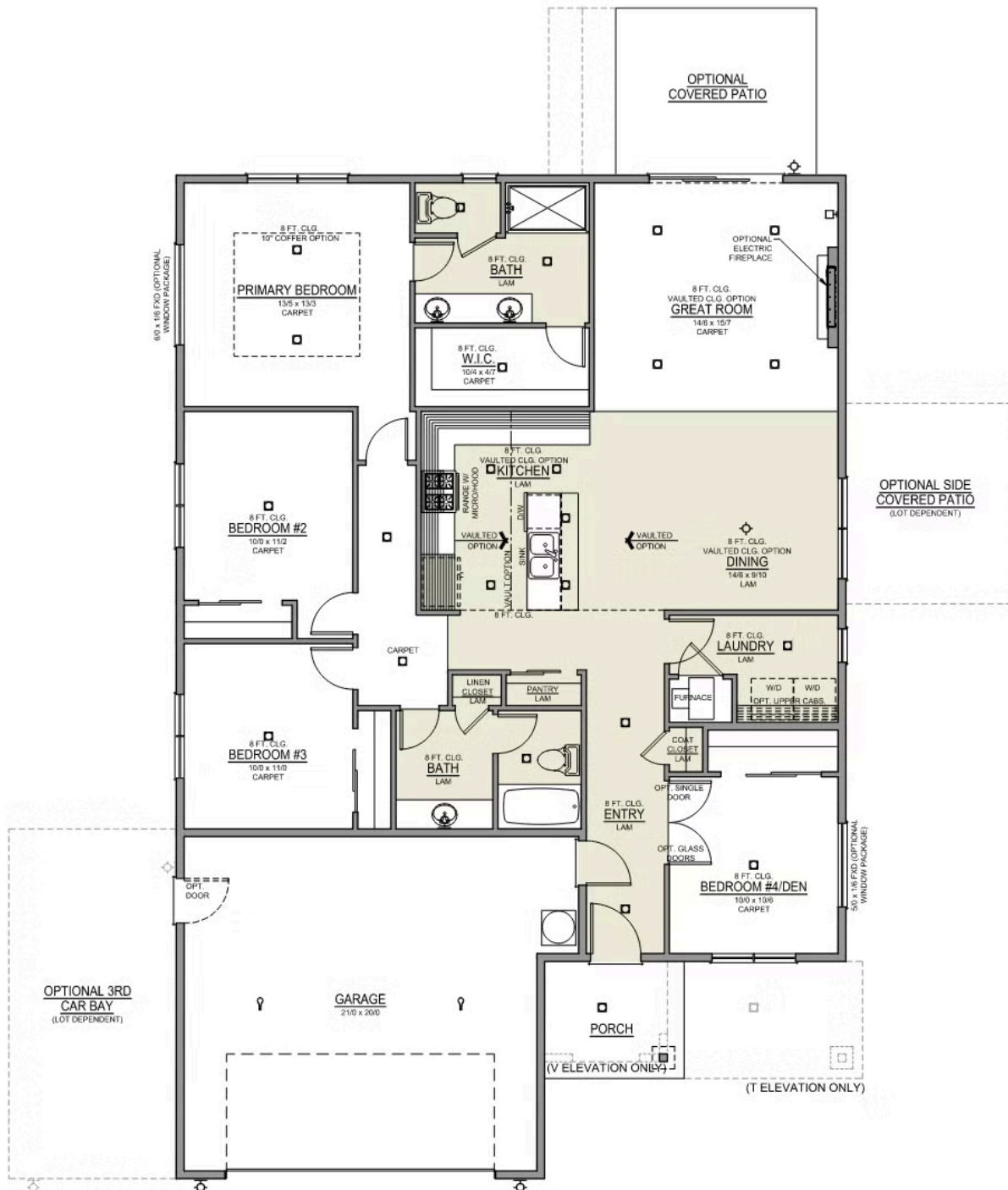
🚗 2 Car Garage

💰 379,997

Charlotte 2-Car

1,701 Sq. Ft.

4 Bedroom, 2 Bath



McClannahan Summit

OPTIONS

Charlotte
LOT 94


596 Arthur St. Umatilla, OR 97882

 4 Bedrooms

 2 Bathrooms

 1,701 Sq. Ft.

 2 Car Garage

 379,997

- Interior Color Package: "Granite Shoreline". Painted Cabinets (All cabinets in house MUST be selected as "PAINTED")
- Exterior Color Package: Alpine Trail
- Light Fixtures: Acadia
- Doors: Hardware Standard. "Cove" knobs / "Amador" front door handle.
- Bathroom: Shower Enclosure(s) Glass Color Choice
- Electrical: Tech Package Pre Wire - Includes Panel, 110 outlet, 1 Dual Wall Plate (Coax & Ethernet) in Great Room
- Ceilings: (Premier Series Only) Vault in Great Room and Coffered Ceiling in Primary Bedroom.
- Kitchen: 30" Cabinets. PAINTED Kitchen & Bathroom Cabinets.
- Cabinets: Specify Color of Knobs and Pulls
- Counters: Quartz Counters and Backsplash in Kitchen
- Counters: Quartz Counters and Backsplash in Guest Bath
- Counters: Quartz Counters and Backsplash in Primary Bath
- Exterior Covered Patio: Rear - 12x10
- Kitchen: Pendant Lights over Kitchen Island - In place of recessed LED
- Fencing: Cedar, Dog-eared, 6' tall. (50 ft Min. Order)
- Fencing: 4' wide Walk Gate. Cedar, Dog-eared, 6' tall.
- Flooring: Hallway Down - Wood Laminate (Casita Court)
- Garage: Garage Door Opener
- Garage: Garage Door Opener Wireless Keypad
- HVAC: Air Conditioner - PreWire not previously selected (Not available for Duets)
- Fireplace: Electric Fireplace - Drywall Only w/ Mantle
- Landscape: Backyard Landscaping. Up to a 60-ft wide lot
- Kitchen: Farm Sink - Stainless Steel Single Bowl
REQUIRES QUARTZ COUNTERTOPS
- Kitchen or Laundry Sink: Upgrade Faucet to Moen Arbor. SPECIFY Location(s) and Color (Kitchen or Laundry, and Black or Spot Resistant Stainless).
- Retaining Wall to be built with: Manor stone block, Gravel, and drain pipe perforated with sock - 42" Retaining Wall

MonteVista
HOMES

541-833-9119

In a continual effort to improve our product, MonteVista Homes reserves the right to change product design, features, materials, floor plans, specifications, prices and terms without prior notice. Square footage stated or implied are approximate. Images may be representative of future home and show what's possible not what's included. Seller is a licensed real estate broker in the State of Oregon. CCB#203709

