

McClannahan Summit

Charlotte
LOT 125

612 Arthur St. Umatilla, OR 97882

4 Bedrooms

2 Bathrooms

1,701 Sq. Ft.

2 Car Garage

375,000

UNDER CONSTRUCTION



The Charlotte delivers a great combination of space and efficiency, offering four bedrooms in 1,701 square feet. The open kitchen, dining area, and great room form the home's central hub, inviting people to connect naturally throughout the day. Well-proportioned bedrooms give everyone room to spread out for rest, work, or hobbies without feeling closed in, and the layout lives larger than its footprint suggests.

MonteVista
HOMES

541-833-9119

In a continual effort to improve our product, MonteVista Homes reserves the right to change product design, features, materials, floor plans, specifications, prices and terms without prior notice. Square footage stated or implied are approximate. Images may be representative of future home and show what's possible not what's included. Seller is a licensed real estate broker in the State of Oregon. CCB#203709



McClannahan Summit

Charlotte
LOT 125

612 Arthur St. Umatilla, OR 97882

🛏 4 Bedrooms

🚿 2 Bathrooms

🏠 1,701 Sq. Ft.

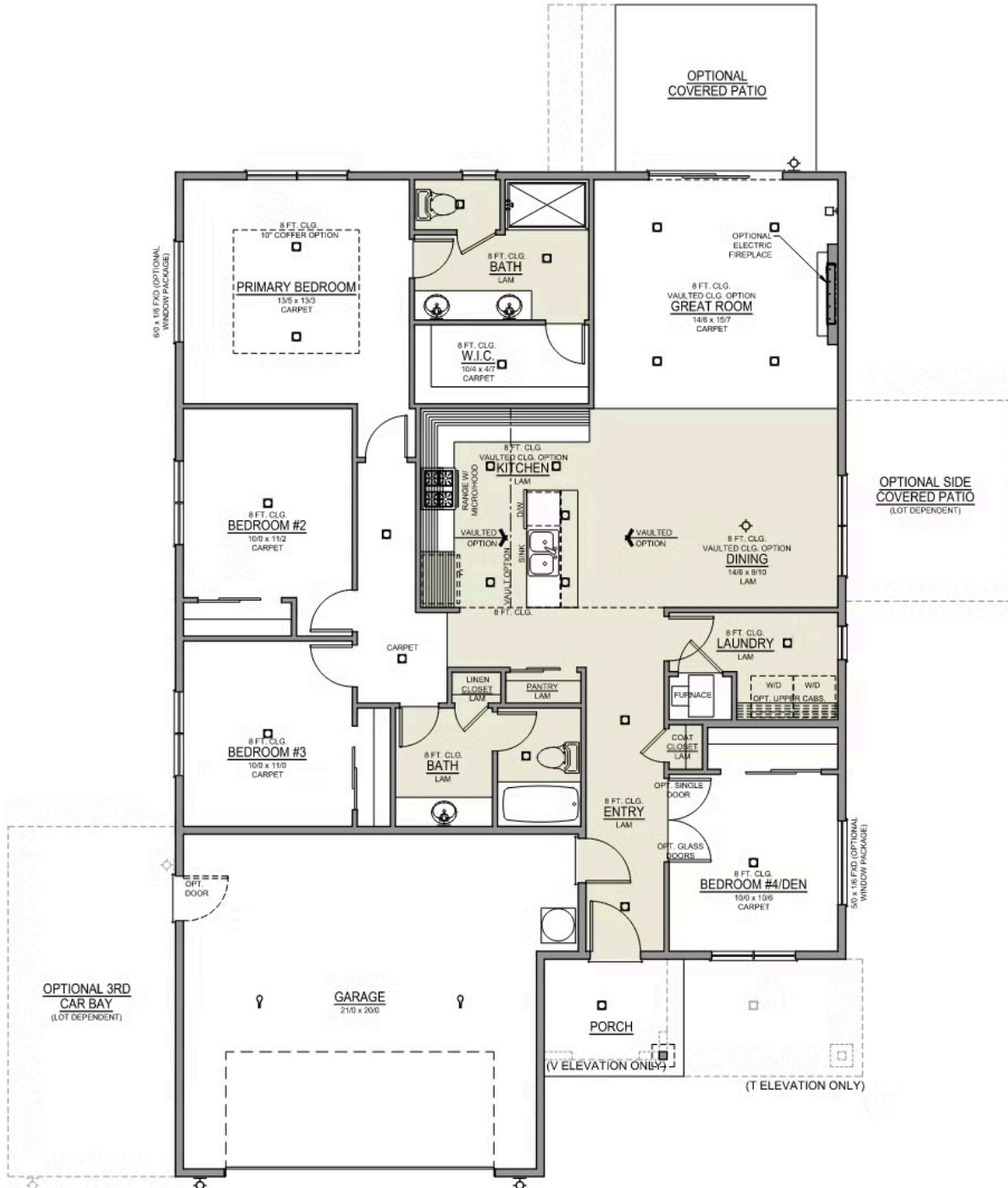
🚗 2 Car Garage

💰 375,000

Charlotte 2-Car

1,701 Sq. Ft.

4 Bedroom, 2 Bath



McClannahan Summit

OPTIONS

Charlotte
LOT 125

612 Arthur St. Umatilla, OR 97882

 4 Bedrooms

 2 Bathrooms

 1,701 Sq. Ft.

 2 Car Garage

 375,000

- Interior Color Package: "Mountain Vogue". Includes Stained Cabinets.
- Interior Walls/Trim: Walls - "Pure White" , Trim - "Drift of Mist"
- Exterior Color Package: Rustic Woods
- Light Fixtures: Acadia
- Doors: Standard Hardware. Cove knobs / Amador front door handle.
- Bathroom: Upgraded finishes in BLACK. Soaker Tub NOT included. All bathrooms. (Plumbing Fixtures, bath accessories and shower door hardware)
- Bathroom: Every Glass Shower Enclosure - Color Choice - "Clear Glass".
- Electrical: Tech Package Pre Wire - Includes Panel, 110 outlet, 1 Dual Wall Plate (Coax & Ethernet) in Great Room
- Ceilings: (Premier Series Only) Vault in Great Room and Coffered Ceiling in Primary Bedroom.
- Kitchen: Wall Range. 36" PAINTED Cabinets. All Kitchen & Bath Cabs Painted. (Premier/Origin: Upgrade Kitchen to 36" Painted Cabs. Distinct: Upgrade Kitchen Cabs to Painted).
- Cabinets: Specify Color of Knobs and Pulls
- Counters: Quartz Counters and Backsplash (6") in Kitchen
- Counters: Quartz Counters and Backsplash in Guest Bath(s)
- Counters: Quartz Counters and Backsplash in Primary Bath
- Exterior Covered Patio: Rear - 12x10
- Electrical: Surface Mount LEDs. Add 2 for 4 total + Dimmer switch. For Primary Bedroom (N/A for Florence).
- Flooring: Great Room - Wood Laminate (Casita Court)
- Flooring: Hallway Down & Linen Closets - Wood Laminate (Casita Court)
- Garage: Garage Door Opener
- Garage: Garage Door Opener Wireless Keypad
- HVAC: System - Air Conditioner (Includes PreWire). *Not available for Duets.
- Fireplace: Electric Fireplace - Drywall Only w/ Mantle
- Kitchen: Farm Sink - Stainless Steel Single Bowl **REQUIRES QUARTZ COUNTERTOPS**
- Kitchen or Laundry: Upgrade Faucet to Moen Arbor. SPECIFY Location(s) and Color. (Kitchen or Laundry. Black or Spot Resistant Stainless)

MonteVista
HOMES

541-833-9119

In a continual effort to improve our product, MonteVista Homes reserves the right to change product design, features, materials, floor plans, specifications, prices and terms without prior notice. Square footage stated or implied are approximate. Images may be representative of future home and show what's possible not what's included. Seller is a licensed real estate broker in the State of Oregon. CCB#203709

