





McClannahan Summit

Hope Premier
LOT 92

564 Arthur St. Umatilla, OR 97882

 4 Bedrooms  2 Bathrooms  1,906 Sq. Ft.  3 Car Garage  419,997

UNDER CONSTRUCTION



V - FARMHOUSE



- Kitchen Island with Sink
- Kitchen Pantry
- Great Room with Electric Fireplace

- Quartz Countertops throughout Home
- Stainless Steel Appliances

MonteVista
HOMES

541-833-9119

In a continual effort to improve our product, MonteVista Homes reserves the right to change product design, features, materials, floor plans, specifications, prices and terms without prior notice. Square footage stated or implied are approximate. Images may be representative of future home and show what's possible not what's included. Seller is a licensed real estate broker in the State of Oregon. CCB#203709



McClannahan Summit

Hope Premier
LOT 92

564 Arthur St. Umatilla, OR 97882

4 Bedrooms

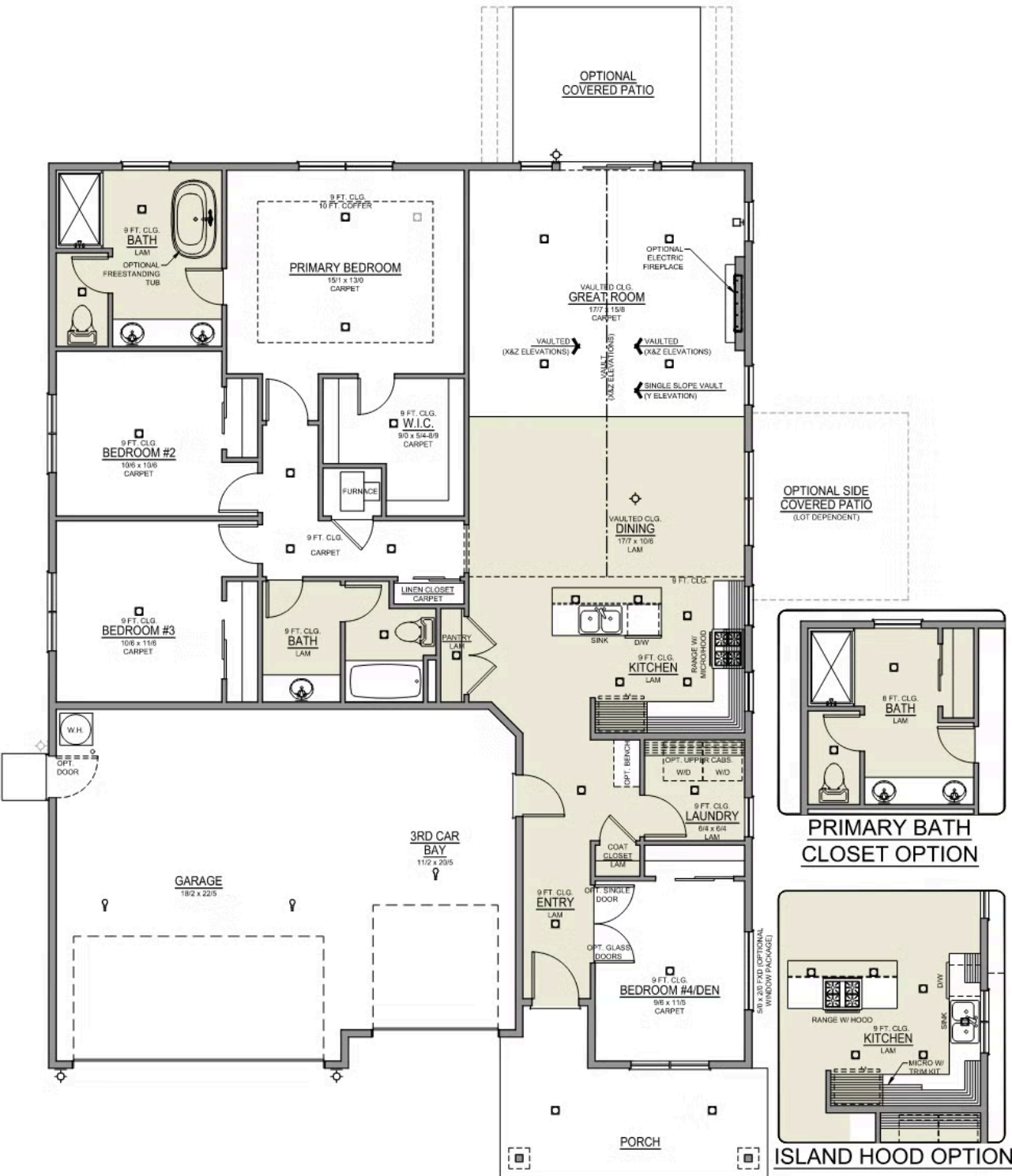
2 Bathrooms

1,906 Sq. Ft.

3 Car Garage

419,997

Hope 3-Car
1,906 Sq. Ft.
4 Bedroom, 2 Bath



McClannahan Summit

Hope Premier
LOT 92

564 Arthur St. Umatilla, OR 97882

4 Bedrooms

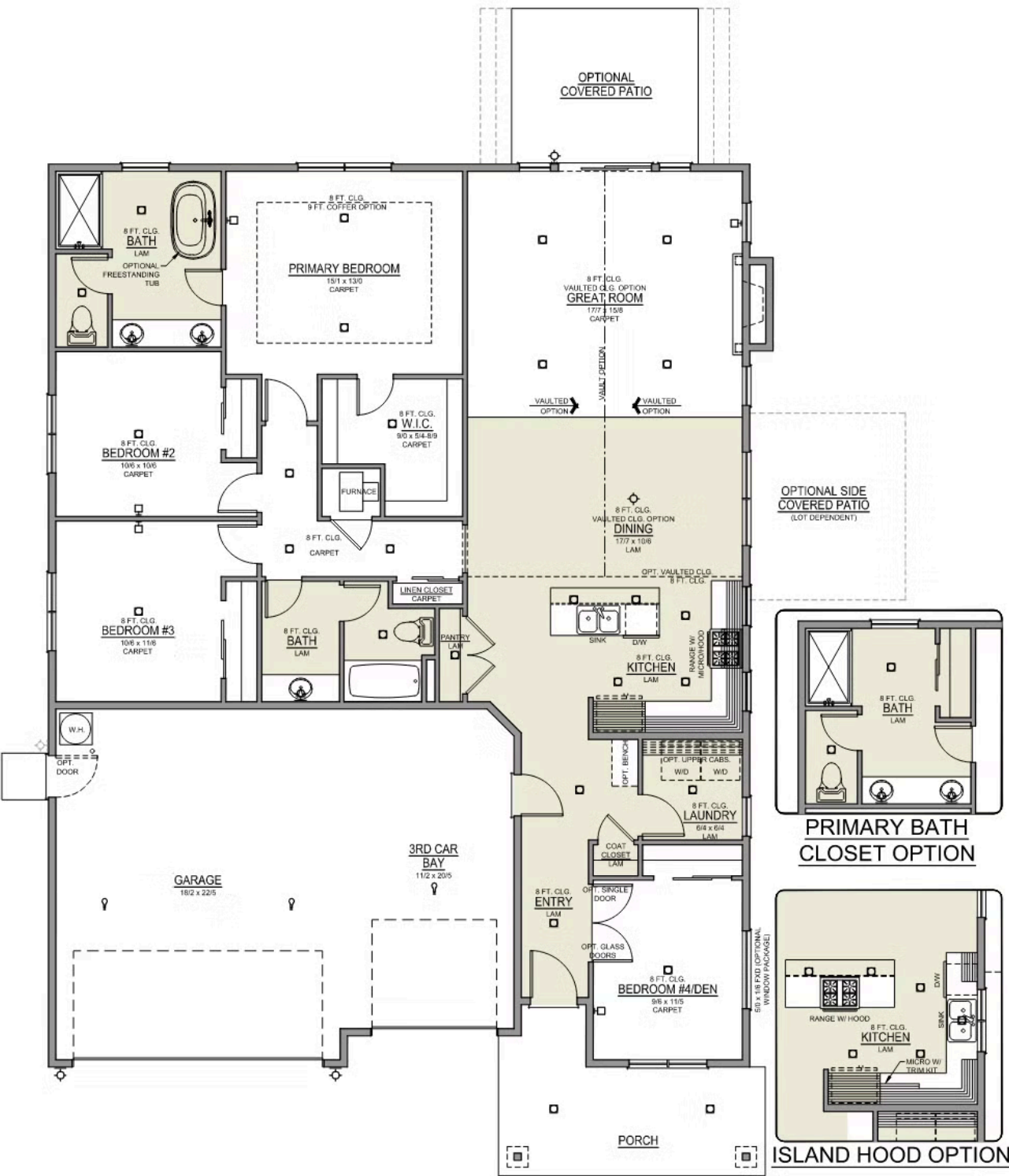
2 Bathrooms

1,906 Sq. Ft.

3 Car Garage

419,997

Hope 3-Car
1,906 Sq. Ft.
4 Bedroom, 2 Bath




McClannahan Summit

OPTIONS

Hope Premier
LOT 92

564 Arthur St. Umatilla, OR 97882

 4 Bedrooms  2 Bathrooms  1,906 Sq. Ft.  3 Car Garage  419,997

- Interior Color Package: "Haven Valley". Painted Cabinets (All cabinets in house MUST be selected as "PAINTED")
- Exterior Color Package: Rustic Woods
- Light Fixtures: Acadia
- Doors: Hardware Standard. "Cove" knobs / "Amador" front door handle.
- Bathroom: Upgrade finishes to BLACK. Soaker Tub INCLUDED. All bathrooms. (Plumbing Fixtures, bath accessories and shower door hardware)
- Bathroom: Shower Enclosure(s) Glass Color Choice
- Electrical: Tech Package Pre Wire - Includes Panel, 110 outlet, 1 Dual Wall Plate (Coax & Ethernet) in Great Room
- Ceilings: (Premier Series Only) Vault in Great Room and Coffered Ceiling in Primary Bedroom.
- Kitchen: 30" Cabinets. PAINTED Kitchen & Bathroom Cabinets.
- Cabinets: Specify Color of Knobs and Pulls
- Counters: Quartz Counters and Backsplash in Kitchen
- Counters: Quartz Counters and Backsplash in Guest Bath
- Counters: Quartz Counters and Backsplash in Primary Bath
- Exterior Covered Patio: Rear - 12x10
- Kitchen: Pendant Lights over Kitchen Island - In place of recessed LED
- Flooring: Hallway Down - Wood Laminate (Casita Court)
- Garage: Garage Door Opener
- Garage: Garage Door Opener Wireless Keypad
- HVAC: Air Conditioner - PreWire not previously selected (Not available for Duets)
- Fireplace: Electric Fireplace - Drywall Only w/ Mantle
- Landscape: Backyard Landscaping. Up to a 60-ft wide lot
- Kitchen: Farm Sink - Stainless Steel Single Bowl
REQUIRES QUARTZ COUNTERTOPS
- Kitchen or Laundry Sink: Upgrade Faucet to Moen Arbor. SPECIFY Location(s) and Color (Kitchen or Laundry, and Black or Spot Resistant Stainless).
- Bathroom: Freestanding Soaker Tub
- Retaining Wall to be built with: Manor stone block, Gravel, and drain pipe perforated with sock - 42" Retaining Wall
- Flooring: Great Room - Wood Laminate (Casita Court)
ESTIMATED

MonteVista
HOMES

541-833-9119

In a continual effort to improve our product, MonteVista Homes reserves the right to change product design, features, materials, floor plans, specifications, prices and terms without prior notice. Square footage stated or implied are approximate. Images may be representative of future home and show what's possible not what's included. Seller is a licensed real estate broker in the State of Oregon. CCB#203709

