






McClannahan Summit

Hope Premier
LOT 107

566 Grant St. Umatilla, OR 97882

 4 Bedrooms  2 Bathrooms  1,906 Sq. Ft.  3 Car Garage  419,900

MOVE-IN READY



U - CRAFTSMAN



[Limited-Time 4.99% Interest Rate Incentive*](#)

**See agent for details*

- Kitchen Island with Sink
- Kitchen Pantry
- Great Room with Fireplace
- Quartz Countertops throughout Home
- Stainless Steel Appliances

MonteVista
HOMES

541-833-9119

In a continual effort to improve our product, MonteVista Homes reserves the right to change product design, features, materials, floor plans, specifications, prices and terms without prior notice. Square footage stated or implied are approximate. Images may be representative of future home and show what's possible not what's included. Seller is a licensed real estate broker in the State of Oregon. CCB#203709



McClannahan Summit

Hope Premier
LOT 107

566 Grant St. Umatilla, OR 97882

4 Bedrooms

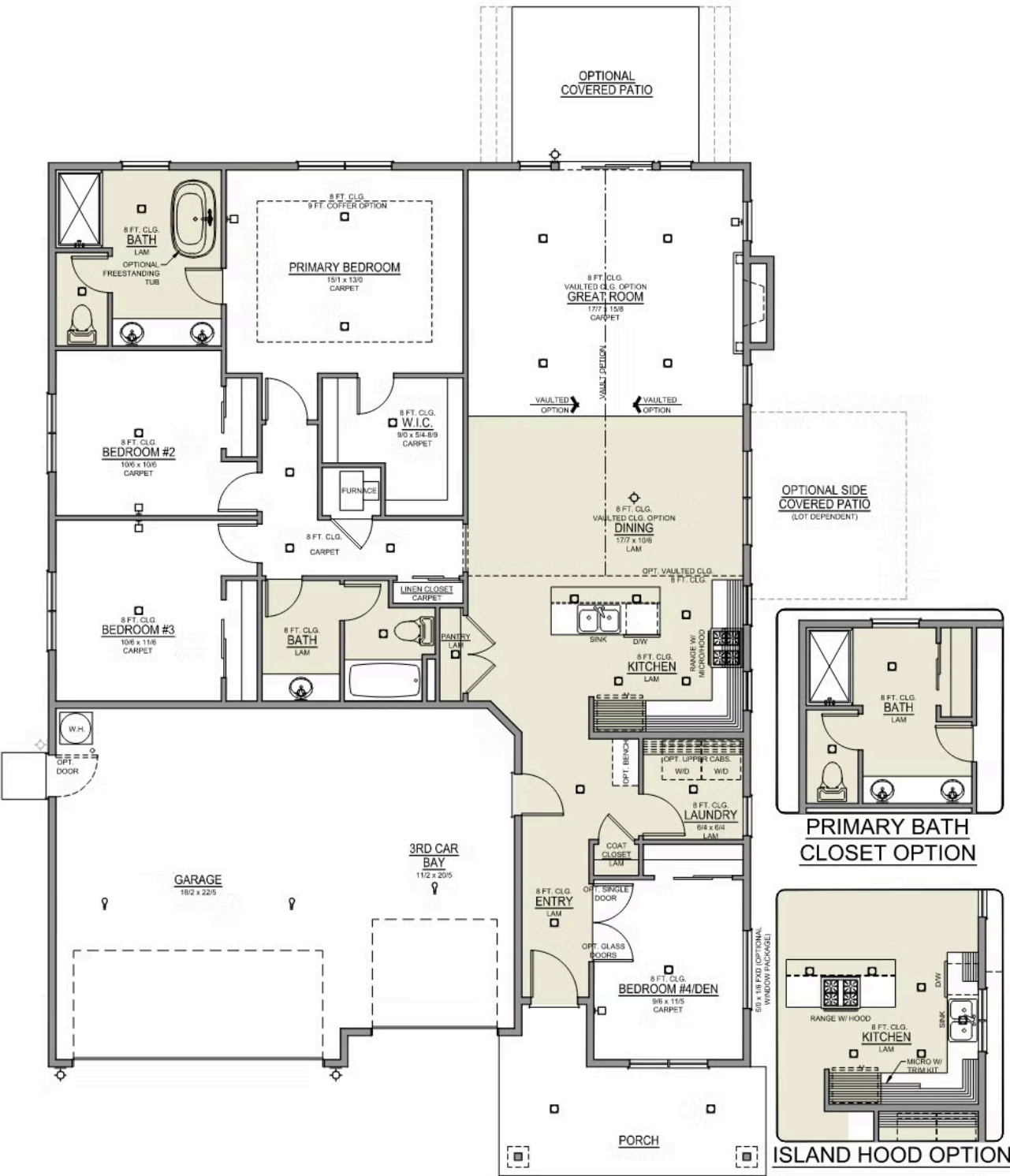
2 Bathrooms

1,906 Sq. Ft.

3 Car Garage

419,900

Hope 3-Car
1,906 Sq. Ft.
4 Bedroom, 2 Bath





McClannahan Summit

OPTIONS

Hope Premier
LOT 107

566 Grant St. Umatilla, OR 97882

 4 Bedrooms  2 Bathrooms  1,906 Sq. Ft.  3 Car Garage  419,900

- Interior Color Package: "Haven Valley". Painted Cabinets (All cabinets in house MUST be selected as "PAINTED")
- Exterior Color Package: Twilight Ridge
- Light Fixtures: Acadia
- Doors: Hardware Standard. "Cove" knobs / "Amador" front door handle.
- Bathroom: Upgrade finishes to BLACK. Soaker Tub INCLUDED. All bathrooms. (Plumbing Fixtures, bath accessories and shower door hardware)
- Bathroom: Shower Enclosure(s) Glass Color Choice
- Electrical: Tech Package Pre Wire - Includes Panel, 110 outlet, 1 Dual Wall Plate (Coax & Ethernet) in Great Room
- Windows Package: Optional Windows
- Ceilings: (Premier Series Only) Vault in Great Room and Coffered Ceiling in Primary Bedroom.
- Kitchen: Island Range with Hood. 36" Cabinets. PAINTED Kitchen & Bathroom Cabinets. Sliding Window over the sink.
- Cabinets: Specify Color of Knobs and Pulls
- Counters: Quartz Counters and Backsplash in Kitchen
- Counters: Quartz Counters and Backsplash in Guest Bath
- Counters: Quartz Counters and Backsplash in Primary Bath
- Exterior Covered Patio: Rear - 12x10
- Flooring: Great Room - Wood Laminate (Casita Court)
- Flooring: Hallway Down - Wood Laminate (Casita Court)
- Garage: Garage Door Opener
- Garage: Garage Door Opener Wireless Keypad
- HVAC: Air Conditioner - PreWire not previously selected (Not available for Duets)
- Fireplace: Gas Fireplace (Direct Vent) with Mantel and Stone Surround
- Garage: Insulated Garage - 2 Car Bays. Walls and Ceiling (Garage Door already insulated).
- Landscape: Backyard Landscaping. Up to a 60-ft wide lot
- Exterior: Stone on all Front Column(s)
- Kitchen: Farm Sink - Stainless Steel Single Bowl
REQUIRES QUARTZ COUNTERTOPS
- Kitchen or Laundry Sink: Upgrade Faucet to Moen Arbor. SPECIFY - Location(s) and Color (Black or SRS).
- Bathroom: Freestanding Soaker Tub

MonteVista
HOMES

541-833-9119

In a continual effort to improve our product, MonteVista Homes reserves the right to change product design, features, materials, floor plans, specifications, prices and terms without prior notice. Square footage stated or implied are approximate. Images may be representative of future home and show what's possible not what's included. Seller is a licensed real estate broker in the State of Oregon. CCB#203709

