

McClannahan Summit

Hope
LOT 92

564 Arthur St. Umatilla, OR 97882

🏠 4 Bedrooms

🚿 2 Bathrooms

📏 1,906 Sq. Ft.

🚗 3 Car Garage

🏷️ 399,997

SUMMER SAVINGS HAPPENING NOW!



V - FARMHOUSE ELEVATION



The Hope brings spacious single-level living together with thoughtful flexibility and a rare four-bedroom layout. A front bedroom doubles beautifully as a home office or schoolroom, set apart just enough to create focus and calm. At the center of the home, the open kitchen, dining, and great room offer warm, easy flow for everyday living. The three-car garage adds welcome room for storage, gear, or hobbies. With its generous footprint and intuitive design, the Hope supports those who want comfort, connection, and a home that lives simply and naturally.

MonteVista
HOMES

541-833-9119

In a continual effort to improve our product, MonteVista Homes reserves the right to change product design, features, materials, floor plans, specifications, prices and terms without prior notice. Square footage stated or implied are approximate. Images may be representative of future home and show what's possible not what's included. Seller is a licensed real estate broker in the State of Oregon. CCB#203709



McClannahan Summit

Hope
LOT 92

564 Arthur St. Umatilla, OR 97882

🛏 4 Bedrooms

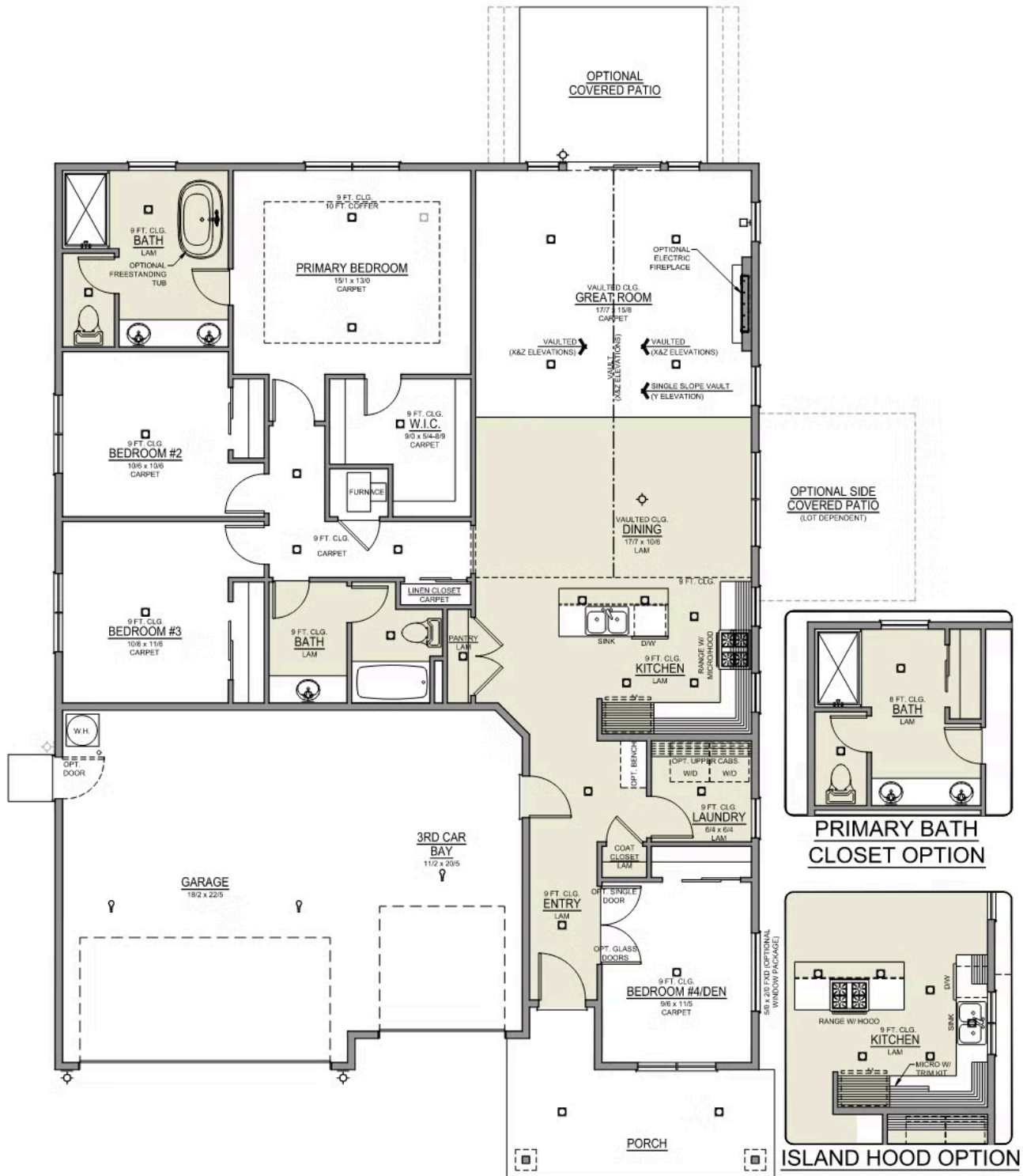
🚿 2 Bathrooms

🏠 1,906 Sq. Ft.

🚗 3 Car Garage

🏷 399,997

Hope 3-Car
1,906 Sq. Ft.
4 Bedroom, 2 Bath



McClannahan Summit

OPTIONS

Hope
LOT 92

564 Arthur St. Umatilla, OR 97882

 4 Bedrooms

 2 Bathrooms

 1,906 Sq. Ft.

 3 Car Garage

 399,997

- Interior Color Package: "Haven Valley". Painted Cabinets (All cabinets in house MUST be selected as "PAINTED")
- Exterior Color Package: Rustic Woods
- Light Fixtures: Acadia
- Doors: Hardware Standard. "Cove" knobs / "Amador" front door handle.
- Bathroom: Upgrade finishes to BLACK. Soaker Tub INCLUDED. All bathrooms. (Plumbing Fixtures, bath accessories and shower door hardware)
- Bathroom: Shower Enclosure(s) Glass Color Choice
- Electrical: Tech Package Pre Wire - Includes Panel, 110 outlet, 1 Dual Wall Plate (Coax & Ethernet) in Great Room
- Ceilings: (Premier Series Only) Vault in Great Room and Coffered Ceiling in Primary Bedroom.
- Kitchen: 30" Cabinets. PAINTED Kitchen & Bathroom Cabinets.
- Cabinets: Specify Color of Knobs and Pulls
- Counters: Quartz Counters and Backsplash in Kitchen
- Counters: Quartz Counters and Backsplash in Guest Bath
- Counters: Quartz Counters and Backsplash in Primary Bath
- Exterior Covered Patio: Rear - 12x10
- Kitchen: Pendant Lights over Kitchen Island - In place of recessed LED
- Fencing: Cedar, Dog-eared, 6' tall. (50 ft Min. Order)
- Fencing: 4' wide Walk Gate. Cedar, Dog-eared, 6' tall.
- Flooring: Hallway Down - Wood Laminate (Casita Court)
- Garage: Garage Door Opener
- Garage: Garage Door Opener Wireless Keypad
- HVAC: Air Conditioner - PreWire not previously selected (Not available for Duets)
- Fireplace: Electric Fireplace - Drywall Only w/ Mantle
- Landscape: Backyard Landscaping. Up to a 60-ft wide lot
- Kitchen: Farm Sink - Stainless Steel Single Bowl
REQUIRES QUARTZ COUNTERTOPS
- Kitchen or Laundry Sink: Upgrade Faucet to Moen Arbor. SPECIFY Location(s) and Color (Kitchen or Laundry, and Black or Spot Resistant Stainless).
- Bathroom: Freestanding Soaker Tub
- Retaining Wall to be built with: Manor stone block, Gravel, and drain pipe perforated with sock - 42" Retaining Wall
- Flooring: Great Room - Wood Laminate (Casita Court)
ESTIMATED

MonteVista
HOMES

541-833-9119

In a continual effort to improve our product, MonteVista Homes reserves the right to change product design, features, materials, floor plans, specifications, prices and terms without prior notice. Square footage stated or implied are approximate. Images may be representative of future home and show what's possible not what's included. Seller is a licensed real estate broker in the State of Oregon. CCB#203709

