

McClannahan Summit

Metolius Premier
LOT 68

449 Taft St. Umatilla, OR 97882

4 Bedrooms 3 Bathrooms 2,095 Sq. Ft. 3 Car Garage 519,900

UNDER CONSTRUCTION



V - FARMHOUSE, 2 CAR



- Upstairs Flex Space/ Loft
- Kitchen Island with Sink
- Corner Kitchen Pantry
- Main Level Guest Suite or Office
- Great Room with Electric Fireplace

- Primary Suite with Walk-in Closet
- Quartz Countertops throughout Home
- Stainless Steel Appliances
- 9 Foot Ceilings throughout Main Level

MonteVista
HOMES

541-833-9119

In a continual effort to improve our product, MonteVista Homes reserves the right to change product design, features, materials, floor plans, specifications, prices and terms without prior notice. Square footage stated or implied are approximate. Images may be representative of future home and show what's possible not what's included. Seller is a licensed real estate broker in the State of Oregon. CCB#203709



McClannahan Summit

Metolius Premier
LOT 68

449 Taft St. Umatilla, OR 97882

4 Bedrooms

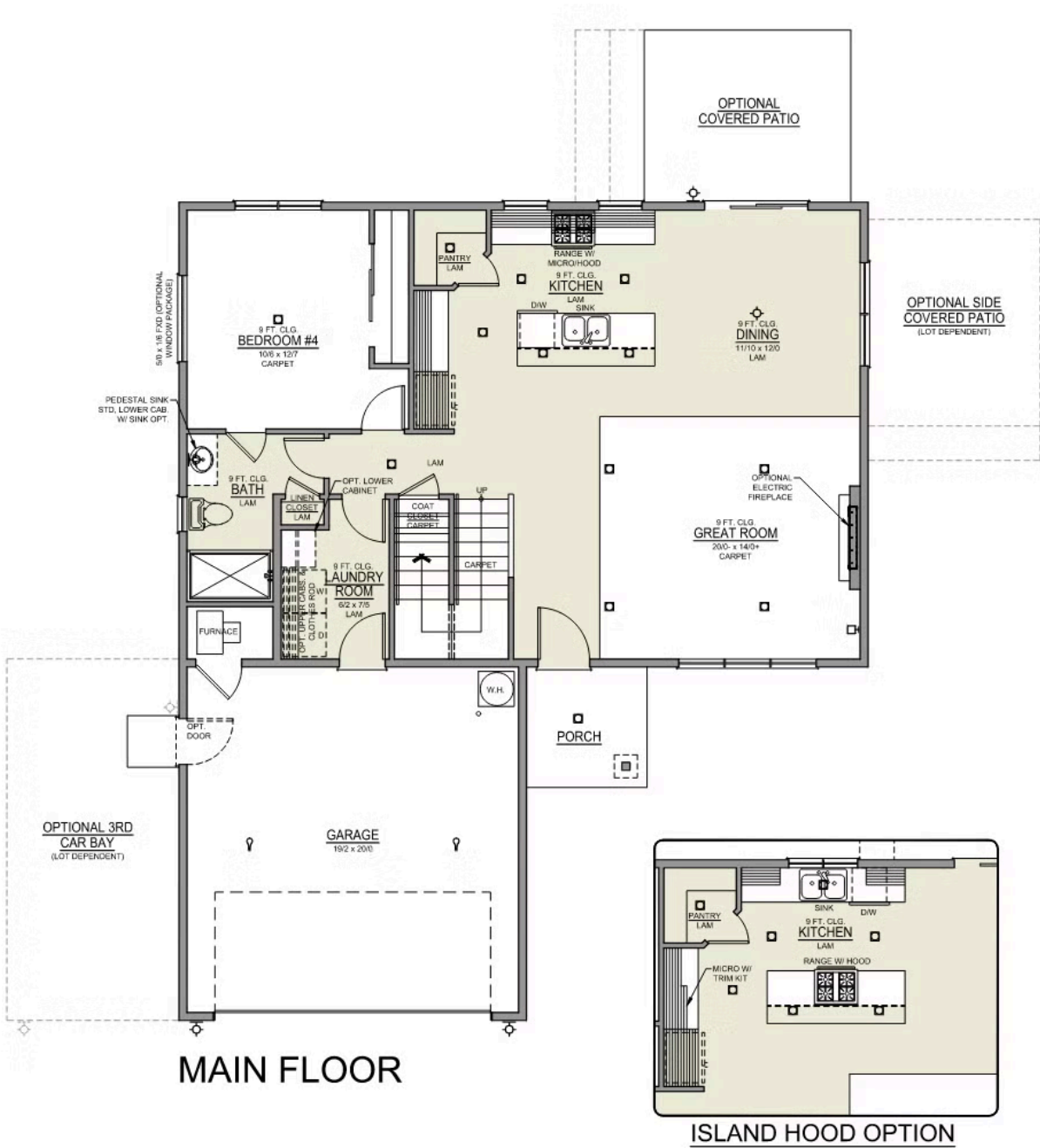
3 Bathrooms

2,095 Sq. Ft.

3 Car Garage

519,900

Metolius 2-Car
2,095 Sq. Ft.
4 Bedroom, 3 Bath



McClannahan Summit

Metolius Premier
LOT 68

449 Taft St. Umatilla, OR 97882

4 Bedrooms

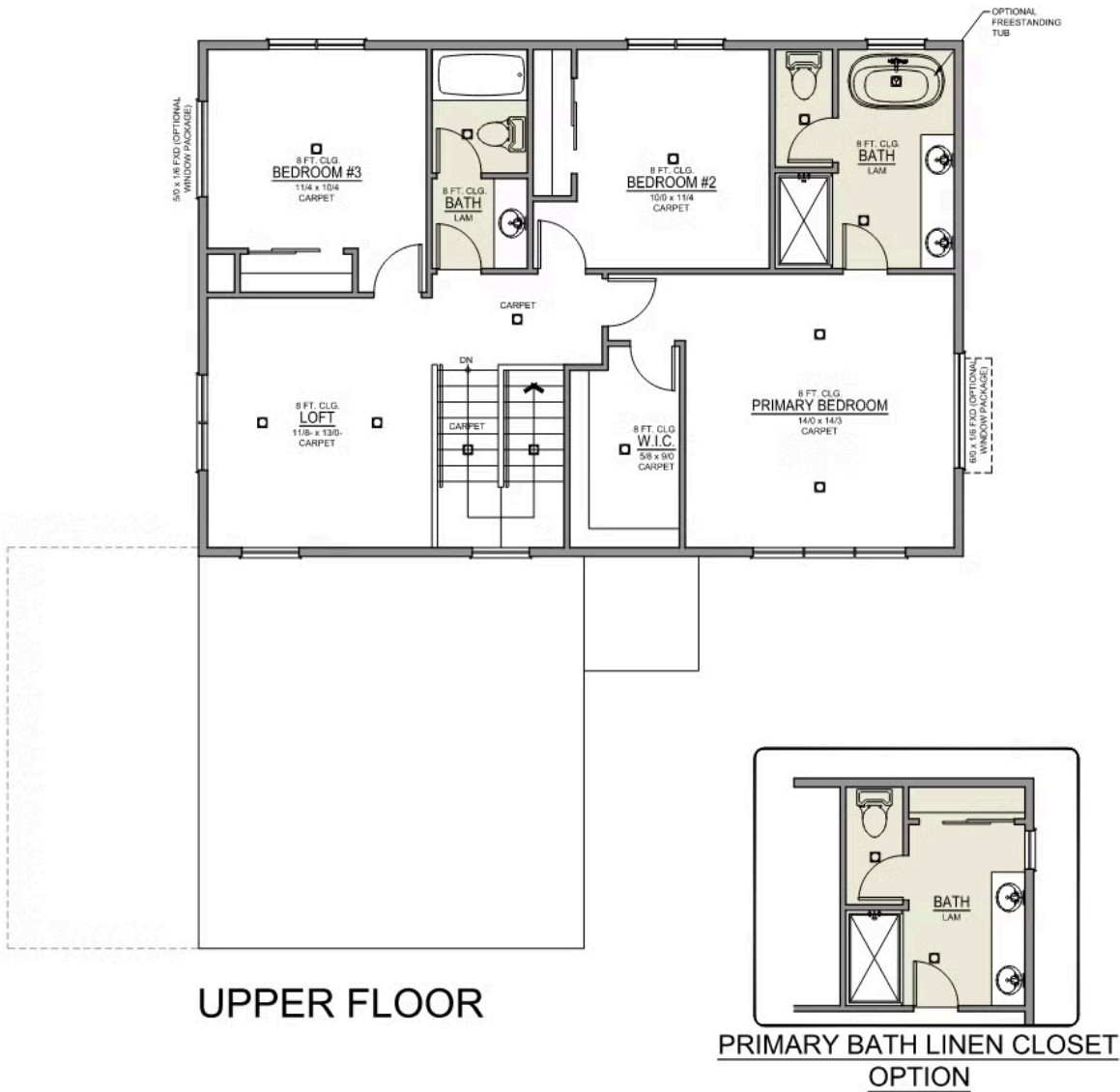
3 Bathrooms

2,095 Sq. Ft.

3 Car Garage

519,900

Metolius 2-Car
2,095 Sq. Ft.
4 Bedroom, 3 Bath



McClannahan Summit

OPTIONS

Metolius Premier
LOT 68

449 Taft St. Umatilla, OR 97882

 4 Bedrooms  3 Bathrooms  2,095 Sq. Ft.  3 Car Garage  519,900

- Interior Color Package: "Horizon Pine". Comes with Stained Cabinets.
- Interior Walls/Trim: Walls - "Drift of Mist" , Trim - "Pure White"
- Exterior Color Package: Alpine Trail
- Light Fixtures: Acadia
- Doors: Standard Hardware. Cove knobs / Amador front door handle.
- Bathroom: Upgrade finishes to BLACK. Soaker Tub INCLUDED. All bathrooms. (Plumbing Fixtures, bath accessories and shower door hardware)
- Bathroom: Every Glass Shower Enclosure - Color Choice - "Clear Glass".
- Electrical: Tech Package Pre Wire - Includes Panel, 110 outlet, 1 Dual Wall Plate (Coax & Ethernet) in Great Room
- Windows Package: Optional Windows
- Kitchen: Island Range/Hood. 36" PAINTED Cabinets. All Kitchen & Bath Cabs Painted. Sliding Window over the sink.
- Laundry Lowers: Add Lower Cabs PAINTED. With Quartz Top and Backsplash - No Sink
- Cabinets: Specify Color of Knobs and Pulls
- Counters: Quartz Counters and Backsplash (6") in Kitchen
- Counters: Quartz Counters and Backsplash in Guest Bath
- Counters: Quartz Counters and Backsplash in Primary Bath
- Exterior Covered Patio: Rear - 12x10
- Flooring: Great Room - Wood Laminate (Casita Court)
- Garage: Garage Door Opener
- Garage: Garage Door Opener Wireless Keypad
- HVAC: System - Air Conditioner (Includes PreWire).
*Not available for Duets.
- Fireplace: Electric Fireplace - Drywall Only w/ Mantle
- Fireplace: Add Shiplap to Electric Fireplace
- Kitchen: Farm Sink - Stainless Steel Single Bowl
REQUIRES QUARTZ COUNTERTOPS
- Kitchen or Laundry: Upgrade Faucet to Moen Arbor. SPECIFY Location(s) and Color. (Kitchen or Laundry. Black or Spot Resistant Stainless)
- Bathroom: Freestanding Soaker Tub

MonteVista
HOMES

541-833-9119

In a continual effort to improve our product, MonteVista Homes reserves the right to change product design, features, materials, floor plans, specifications, prices and terms without prior notice. Square footage stated or implied are approximate. Images may be representative of future home and show what's possible not what's included. Seller is a licensed real estate broker in the State of Oregon. CCB#203709

