

McClannahan Summit

Metolius
LOT 91

548 Arthur St. Umatilla, OR 97882

🏠 4 Bedrooms

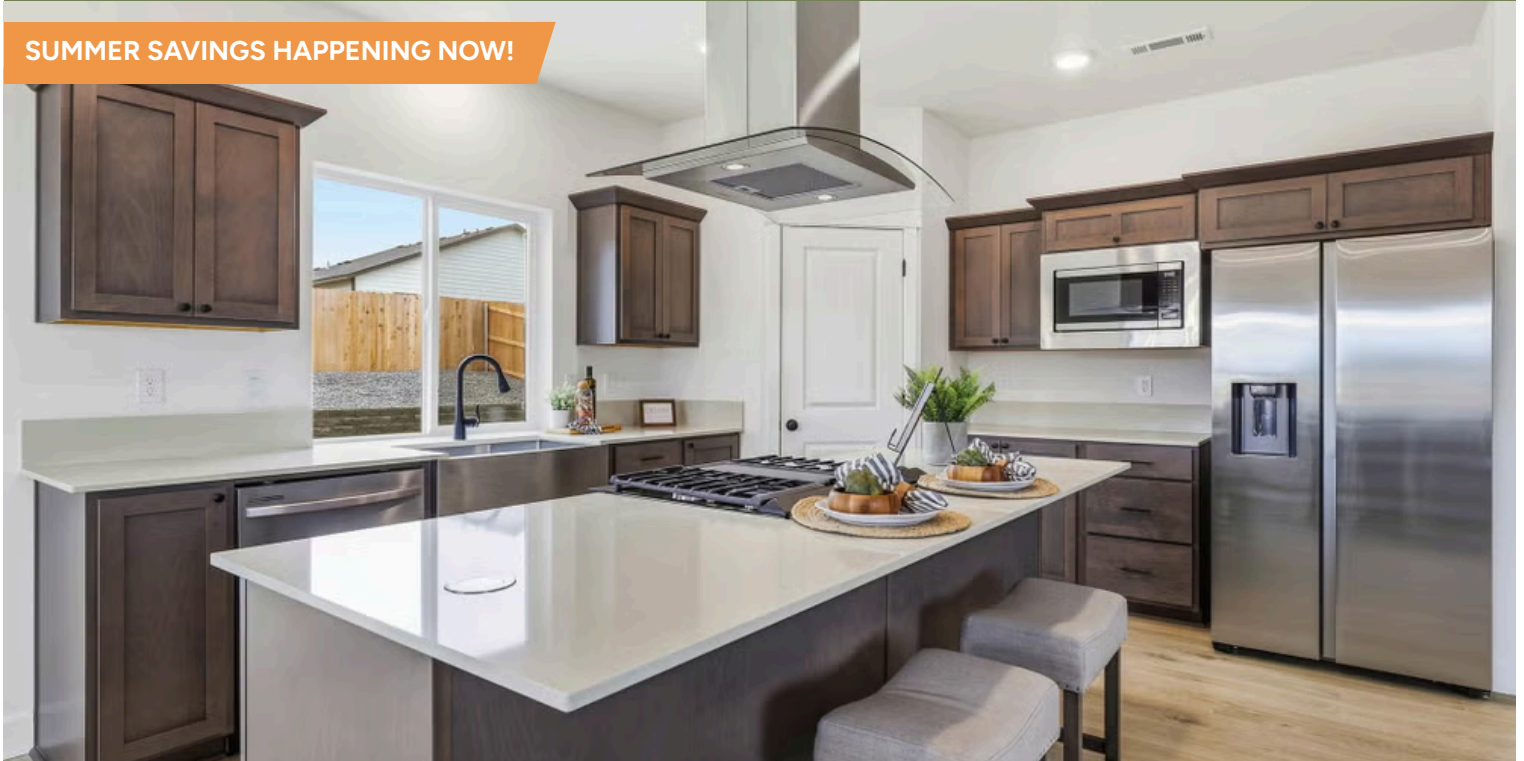
🚿 3 Bathrooms

📏 2,095 Sq. Ft.

🚗 2 Car Garage

🏷️ 439,900

SUMMER SAVINGS HAPPENING NOW!



TRADITIONAL ELEVATION



The Metolius offers a welcoming 2,095 square-foot layout designed for both gathering and retreating. The main level features an open kitchen, dining area, and great room that naturally bring people together for meals, conversation, or quiet evenings at home. A full bedroom and bath downstairs add meaningful flexibility for guests or multigenerational living. Upstairs, the primary suite is paired with two additional bedrooms and a comfortable loft, creating space for rest, play, or daily routines. The Metolius blends connection and comfort in a way that feels both spacious and grounded.

MonteVista
HOMES

541-833-9119

In a continual effort to improve our product, MonteVista Homes reserves the right to change product design, features, materials, floor plans, specifications, prices and terms without prior notice. Square footage stated or implied are approximate. Images may be representative of future home and show what's possible not what's included. Seller is a licensed real estate broker in the State of Oregon. CCB#203709



McClannahan Summit

Metolius
LOT 91

548 Arthur St. Umatilla, OR 97882

🛏 4 Bedrooms 🚿 3 Bathrooms 🏠 2,095 Sq. Ft. 🚗 2 Car Garage 🏷 439,900

Metolius 2-Car
2,095 Sq. Ft.
4 Bedroom, 3 Bath



McClannahan Summit

Metolius
LOT 91

548 Arthur St. Umatilla, OR 97882

🛏 4 Bedrooms

🚿 3 Bathrooms

🏠 2,095 Sq. Ft.

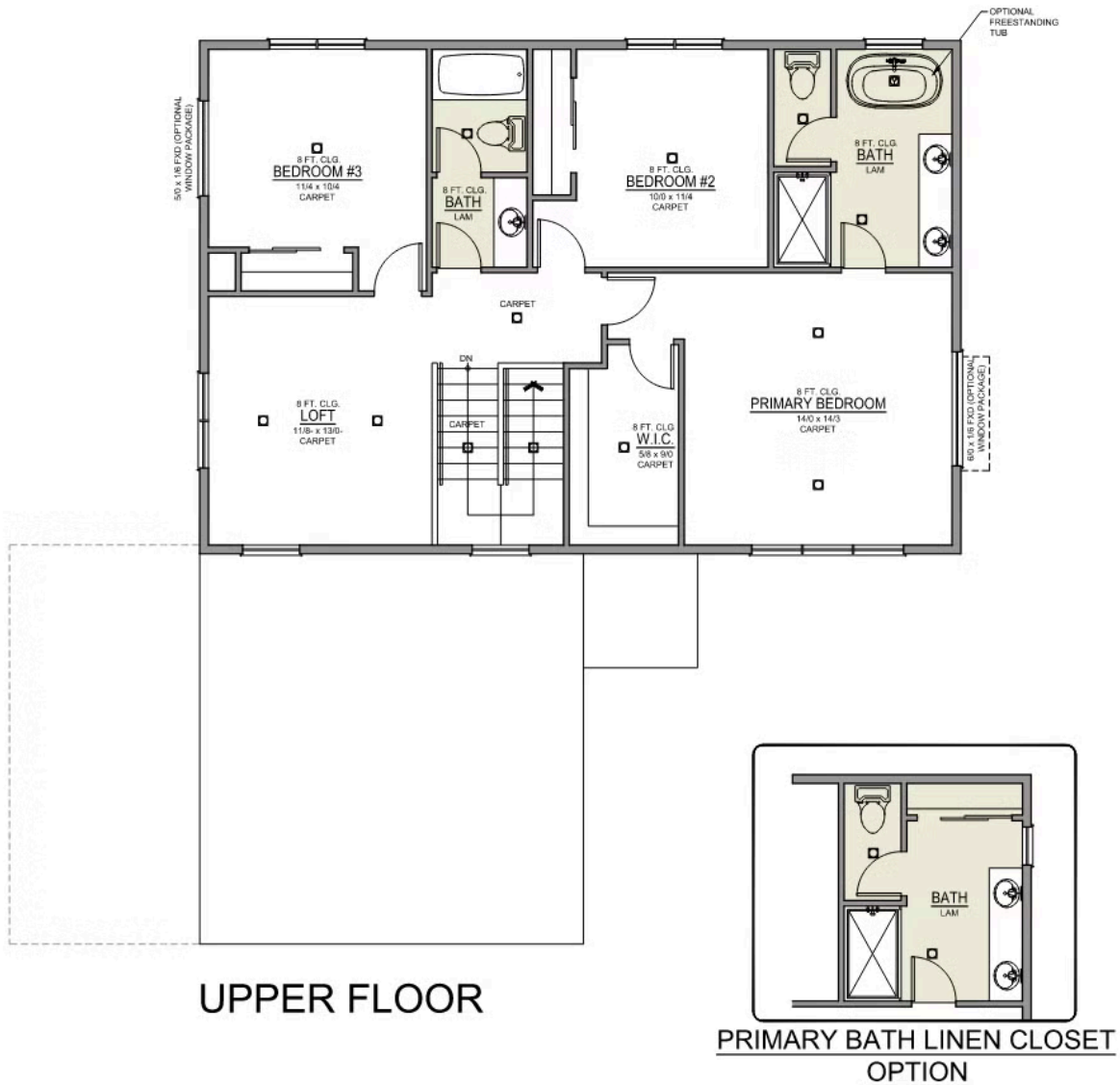
🚗 2 Car Garage

🏠 439,900

Metolius 2-Car

2,095 Sq. Ft.

4 Bedroom, 3 Bath



McClannahan Summit

OPTIONS

Metolius
LOT 91

548 Arthur St. Umatilla, OR 97882

 4 Bedrooms

 3 Bathrooms

 2,095 Sq. Ft.

 2 Car Garage

 439,900

- Interior Color Package: "Urban Oasis"
- Exterior Color Package: Twilight Ridge
- Light Fixtures: Acadia
- Doors: Hardware Standard. "Cove" knobs / "Amador" front door handle.
- Bathroom: Upgrade finishes to BLACK. Soaker Tub INCLUDED. All bathrooms. (Plumbing Fixtures, bath accessories and shower door hardware)
- Bathroom: Shower Enclosure(s) Glass Color Choice
- Corner Lot Exterior Package: Includes Window trim on Corner Side, Flatwork and Corner Lot Landscaping
- Electrical: Tech Package Pre Wire - Includes Panel, 110 outlet, 1 Dual Wall Plate (Coax & Ethernet) in Great Room
- Windows Package: Optional Windows
- Kitchen: Island Range and Hood. 30" Cabinets. Sliding Window over the sink.
- Appliances: Refrigerator - Side-By-Side, Water / Ice
- Cabinets: Specify Color of Knobs and Pulls
- Counters: Quartz Counters and Backsplash in Kitchen
- Counters: Quartz Counters and Backsplash in Guest Bath
- Counters: Quartz Counters and Backsplash in Primary Bath
- Exterior Covered Patio: Rear - 12x10
- Fencing: Cedar, Dog-eared, 6' tall. (50 ft Min. Order)
- Fencing: 4' wide Walk Gate. Cedar, Dog-eared, 6' tall.
- Flooring: Great Room - Wood Laminate (Casita Court)
- Garage: Garage Door Opener
- Garage: Garage Door Opener Wireless Keypad
- HVAC: Air Conditioner - PreWire not previously selected (Not available for Duets)
- Fireplace: Electric Fireplace - Drywall Only w/ Mantle
- Landscape: Backyard Landscaping. Up to a 60-ft wide lot
- Kitchen: Farm Sink - Stainless Steel Single Bowl
REQUIRES QUARTZ COUNTERTOPS
- Kitchen or Laundry Sink: Upgrade Faucet to Moen Arbor. SPECIFY Location(s) and Color (Kitchen or Laundry, and Black or Spot Resistant Stainless).
- Bathroom: Freestanding Soaker Tub
- Retaining Wall to be built with: Manor stone block, Gravel, and drain pipe perforated with sock - 36" Retaining Wall

MonteVista
HOMES

541-833-9119

In a continual effort to improve our product, MonteVista Homes reserves the right to change product design, features, materials, floor plans, specifications, prices and terms without prior notice. Square footage stated or implied are approximate. Images may be representative of future home and show what's possible not what's included. Seller is a licensed real estate broker in the State of Oregon. CCB#203709

