

# MCCLANNAHAN SUMMIT

THIELSEN PREMIER  
LOT 7

401 Taft St. Umatilla, OR 97882

 4 Bedrooms  2.5 Bathrooms  2,373+ Sq. Ft.  2 Car Garage  539,900

MOVE-IN READY



T - Traditional, 2 Car



- Primary Suite On Main Level
- Huge Closet in Primary
- Expansive Open Great Room with Gas Fireplace
- Large Upstairs Bonus Room / Loft
- Gourmet Kitchen
- Kitchen Island
- Kitchen Pantry
- 9 Foot Ceilings throughout Main Level
- Quartz Countertops throughout Home
- Stainless Steel Appliances
- Covered Front Porch

 **MonteVista Homes &  
PacWest Realty Group**

**541-833-9119**  
**[www.MtVistaHomes.com](http://www.MtVistaHomes.com)**

In a continual effort to improve our product, MonteVista Homes reserves the right to change product design, features, materials, floor plans, specifications, prices and terms without prior notice. Square footage stated or implied are approximate. Images may be representative of future home and show what's possible not what's included. Seller is a licensed real estate broker in the State of Oregon. CCB#203709



MCCLANNAHAN SUMMIT

THIELSEN PREMIER  
LOT 7

401 Taft St. Umatilla, OR 97882

4 Bedrooms

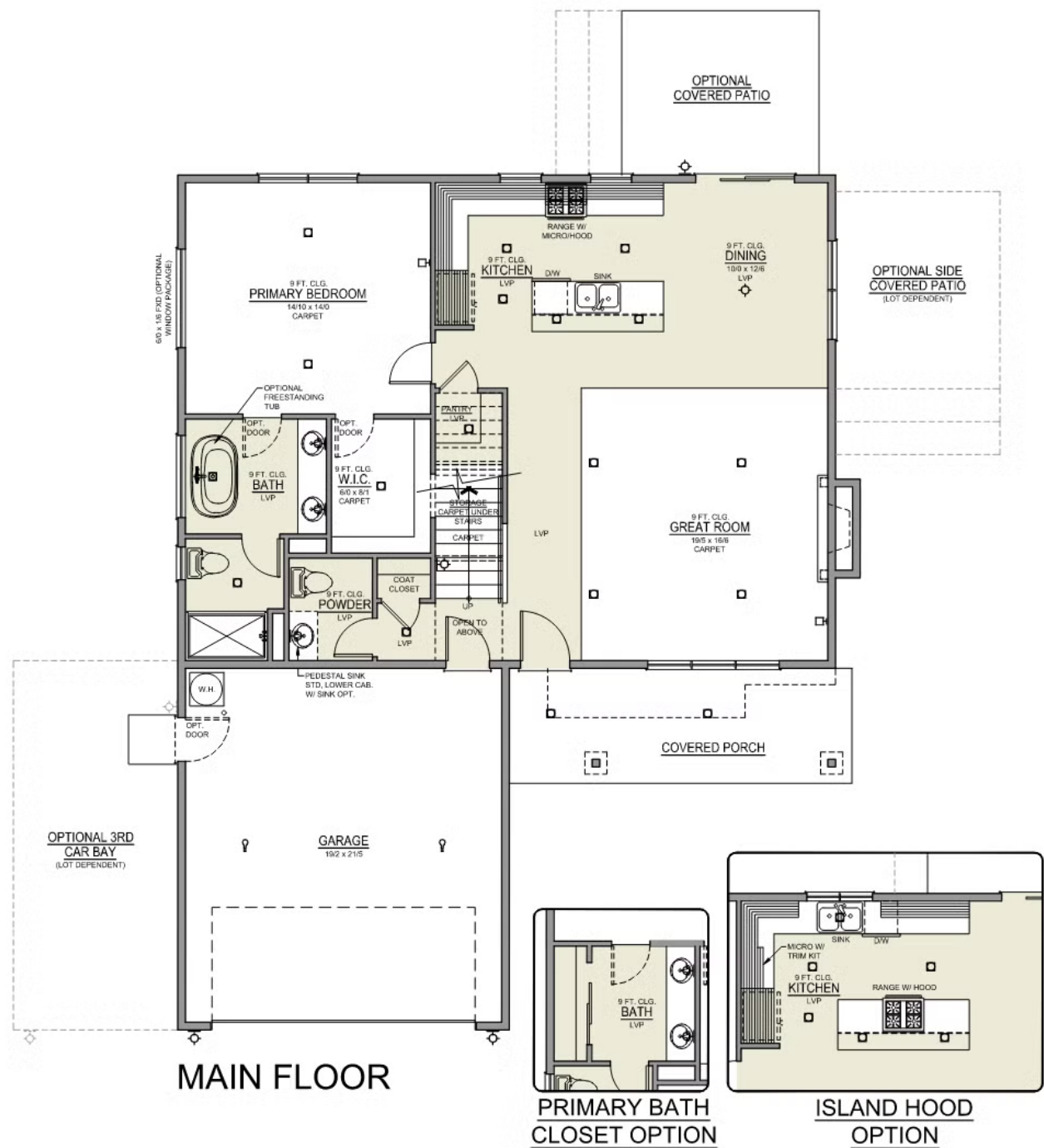
2.5 Bathrooms

2,373+ Sq. Ft.

2 Car Garage

539,900

Thielsen 2-Car  
2,373 Sq. Ft.  
4 Bedroom, 3 Bath



MCCLANNAHAN SUMMIT

THIELSEN PREMIER  
LOT 7

401 Taft St. Umatilla, OR 97882

4 Bedrooms

2.5 Bathrooms

2,373+ Sq. Ft.

2 Car Garage

539,900

Thielsen 2-Car  
2,373 Sq. Ft.  
4 Bedroom, 3 Bath



UPPER FLOOR