

McClannahan Summit

Thielsen Premier
LOT 105

534 Grant St. Umatilla, OR 97882

4 Bedrooms 2.5 Bathrooms 2,373 Sq. Ft. 2 Car Garage 429,900

MOVE-IN READY



U - CRAFTSMAN, 2 CAR



[Limited-Time 4.99% Interest Rate Incentive*](#)

**See agent for details*

- Primary Suite on Main Level with Walk-in Closet
- Great Room with Fireplace
- Upstairs Bonus Room / Loft
- Kitchen Island and Pantry
- 9 Foot Ceilings throughout Main Level
- Quartz Countertops throughout Home
- Stainless Steel Appliances
- Covered Front Porch and Patio

MonteVista
HOMES

541-833-9119

In a continual effort to improve our product, MonteVista Homes reserves the right to change product design, features, materials, floor plans, specifications, prices and terms without prior notice. Square footage stated or implied are approximate. Images may be representative of future home and show what's possible not what's included. Seller is a licensed real estate broker in the State of Oregon. CCB#203709



McClannahan Summit

Thielsen Premier
LOT 105

534 Grant St. Umatilla, OR 97882

4 Bedrooms

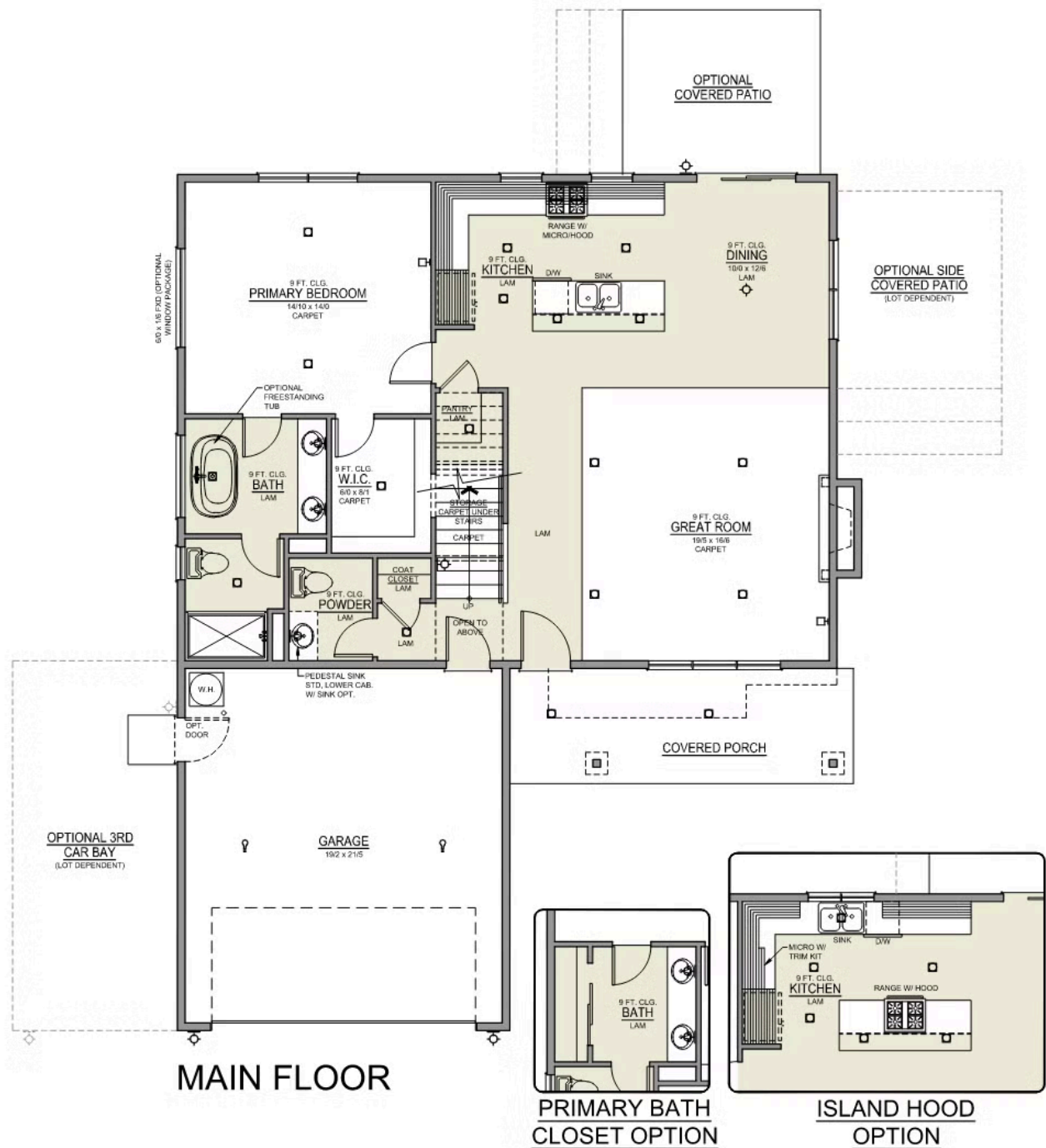
2.5 Bathrooms

2,373 Sq. Ft.

2 Car Garage

429,900

Thielsen 2-Car
2,373 Sq. Ft.
4 Bedroom, 3 Bath



McClannahan Summit

Thielsen Premier
LOT 105

534 Grant St. Umatilla, OR 97882

 4 Bedrooms

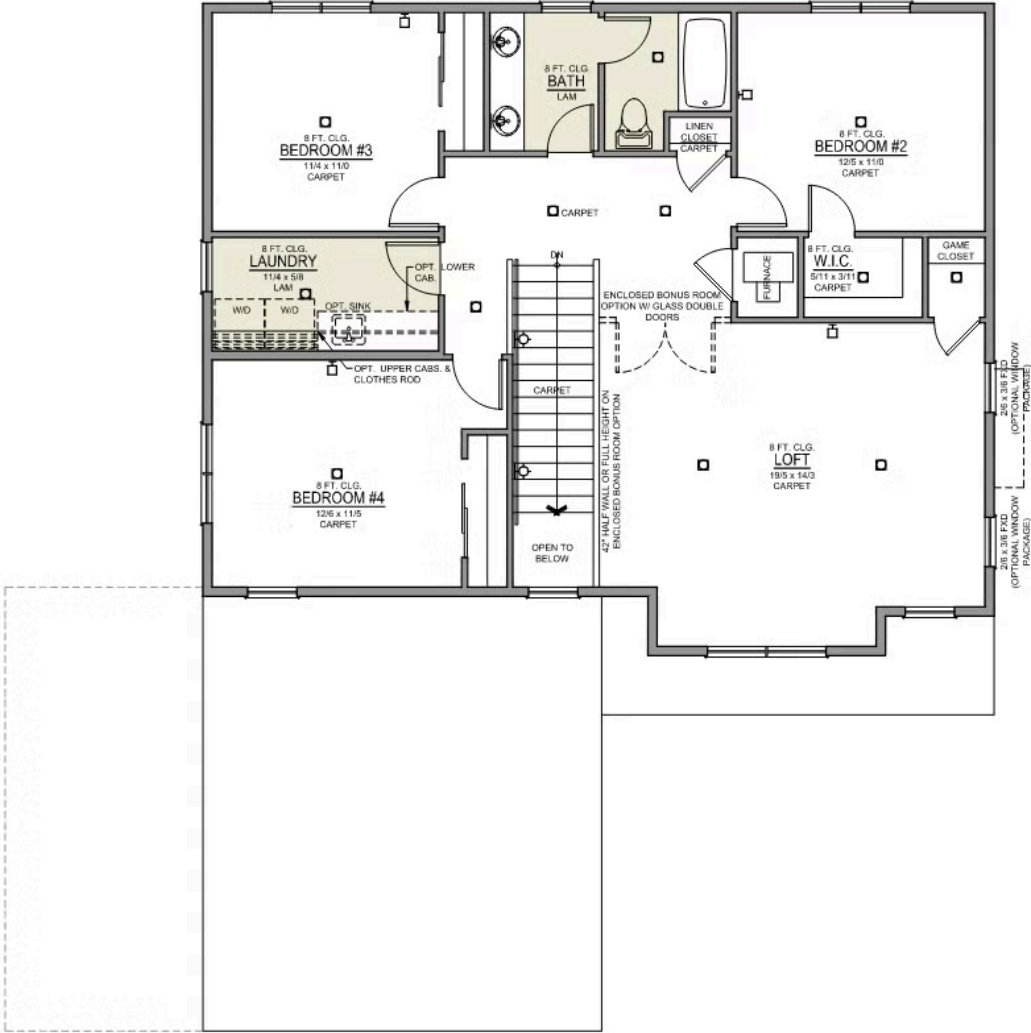
 2.5 Bathrooms

 2,373 Sq. Ft.

 2 Car Garage

 429,900

Thielsen 2-Car
2,373 Sq. Ft.
4 Bedroom, 3 Bath



UPPER FLOOR

McClannahan Summit

OPTIONS

Thielsen Premier
LOT 105

534 Grant St. Umatilla, OR 97882

 4 Bedrooms  2.5 Bathrooms  2,373 Sq. Ft.  2 Car Garage  429,900

- Interior Color Package: "Granite Shoreline". Painted Cabinets (All cabinets in house MUST be selected as "PAINTED")
- Exterior Color Package: Spring Mist
- Light Fixtures: Acadia
- Doors: Hardware Standard. "Cove" knobs / "Amador" front door handle.
- Bathroom: Upgrade finishes to BLACK. Soaker Tub INCLUDED. All bathrooms. (Plumbing Fixtures, bath accessories and shower door hardware)
- Bathroom: Shower Enclosure(s) Glass Color Choice
- Electrical: Tech Package Pre Wire - Includes Panel, 110 outlet, 1 Dual Wall Plate (Coax & Ethernet) in Great Room
- Windows Package: Optional Windows
- Kitchen: Island Range with Hood. 36" Cabinets. PAINTED Kitchen & Bathroom Cabinets. Sliding Window over the sink.
- Cabinets: Specify Color of Knobs and Pulls
- Counters: Quartz Counters and Backsplash in Kitchen
- Counters: Quartz Counters and Backsplash in Guest Bath
- Counters: Quartz Counters and Backsplash in Primary Bath
- Exterior Covered Patio: Rear - 12x10
- Flooring: Great Room - Wood Laminate (Casita Court)
- Flooring: Hallway Up - Wood Laminate (Casita Court)
- Garage: Garage Door Opener
- Garage: Garage Door Opener Wireless Keypad
- HVAC: Air Conditioner - PreWire not previously selected (Not available for Duets)
- Fireplace: Gas Fireplace (Direct Vent) with Mantel and Stone Surround
- Garage: Insulated Garage - 2 Car Bays. Walls and Ceiling (Garage Door already insulated).
- Landscape: Backyard Landscaping. Up to a 60-ft wide lot
- Exterior: Stone on all Front Column(s)
- Exterior: Stone Garage Wing Wall
- Kitchen: Farm Sink - Stainless Steel Single Bowl
REQUIRES QUARTZ COUNTERTOPS
- Bathroom: Freestanding Soaker Tub

MonteVista
HOMES

541-833-9119

In a continual effort to improve our product, MonteVista Homes reserves the right to change product design, features, materials, floor plans, specifications, prices and terms without prior notice. Square footage stated or implied are approximate. Images may be representative of future home and show what's possible not what's included. Seller is a licensed real estate broker in the State of Oregon. CCB#203709

