

McClannahan Summit

Thielsen
LOT 71

497 Taft St. Umatilla, OR 97882

🏠 4 Bedrooms

🚿 2.5 Bathrooms

🏠 2,373 Sq. Ft.

🚗 3 Car Garage

🏷️ 549,997

SUMMER SAVINGS HAPPENING NOW!



THIELSEN TRADITIONAL ELEVATION



The Thielsen uses its 2,373 square feet to balance generous living spaces with thoughtful flow. A main-level primary suite offers a private retreat, while an open kitchen and great room at the heart of the home create a natural center for everyday living and gatherings. Upstairs, a large bonus room expands how the home can be used for media or play, while additional bedrooms give family or guests space to unwind. With its versatile layout and meaningful transitions between spaces, the Thielsen supports a lifestyle filled with connection and comfortable rhythms.

MonteVista
HOMES

541-833-9119

In a continual effort to improve our product, MonteVista Homes reserves the right to change product design, features, materials, floor plans, specifications, prices and terms without prior notice. Square footage stated or implied are approximate. Images may be representative of future home and show what's possible not what's included. Seller is a licensed real estate broker in the State of Oregon. CCB#203709



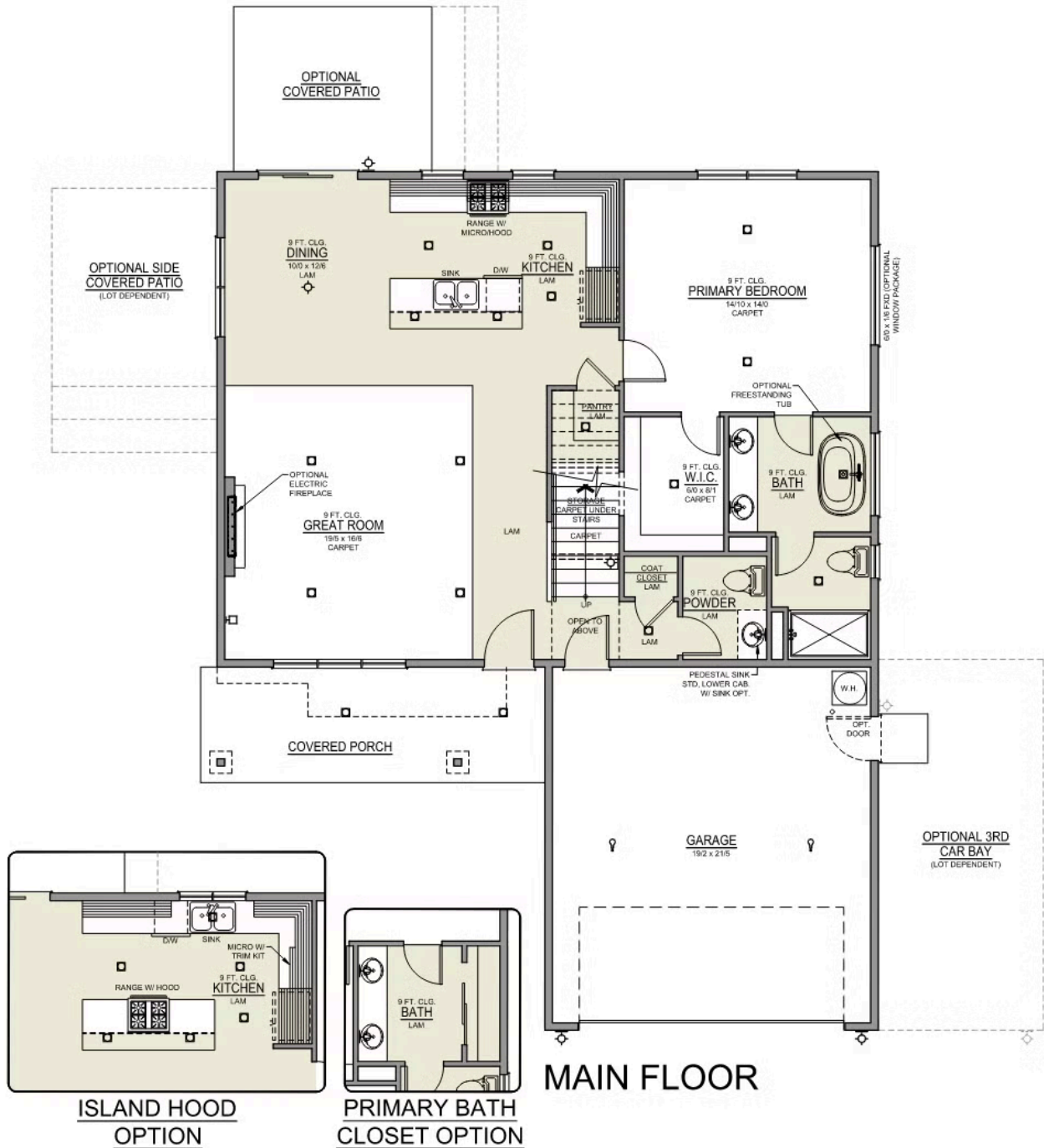
McClannahan Summit

Thielsen
LOT 71

497 Taft St. Umatilla, OR 97882

🏠 4 Bedrooms 🚿 2.5 Bathrooms 🏠 2,373 Sq. Ft. 🚗 3 Car Garage 💰 549,997

Thielsen 2-Car
2,373 Sq. Ft.
4 Bedroom, 3 Bath



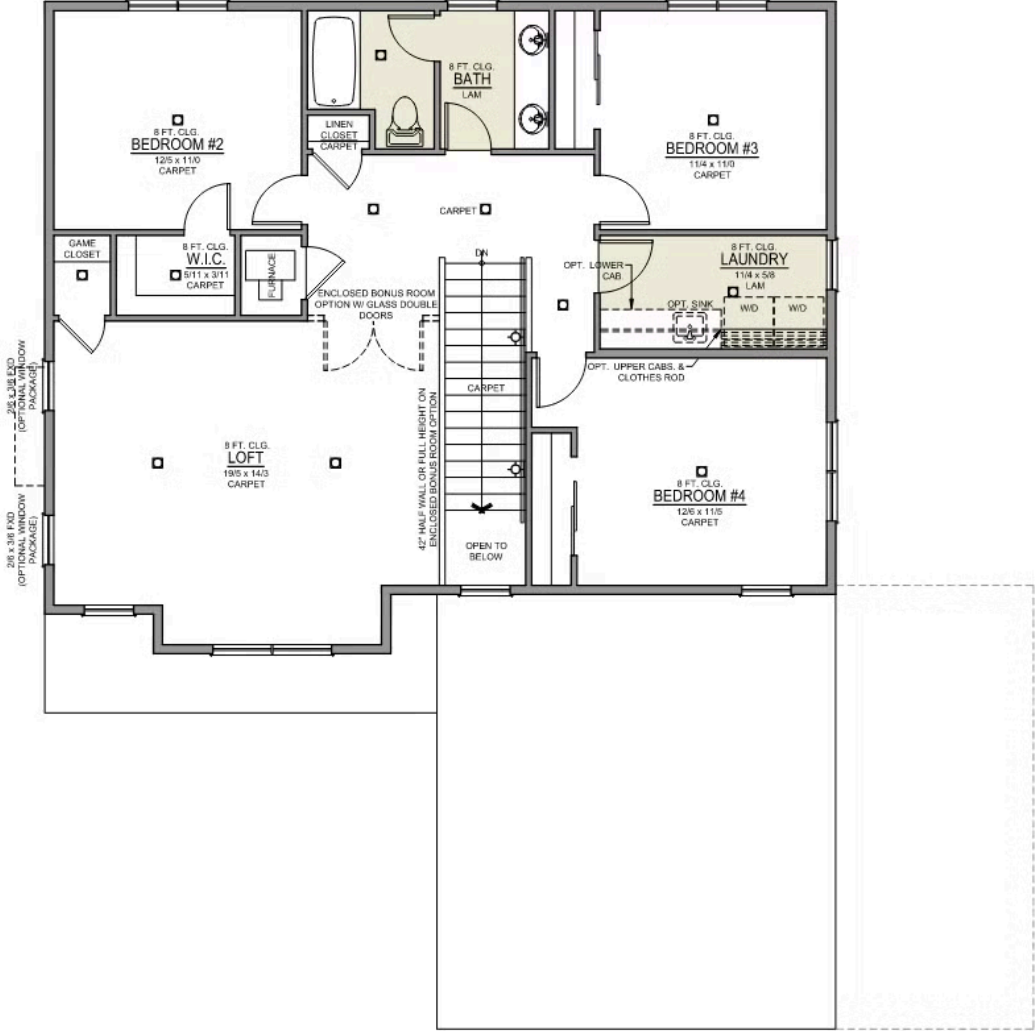
McClannahan Summit

Thielsen
LOT 71

497 Taft St. Umatilla, OR 97882

🛏️ 4 Bedrooms 🚿 2.5 Bathrooms 🏠 2,373 Sq. Ft. 🚗 3 Car Garage 💰 549,997

Thielsen 2-Car
2,373 Sq. Ft.
4 Bedroom, 3 Bath



UPPER FLOOR

McClannahan Summit

OPTIONS

Thielsen
LOT 71


497 Taft St. Umatilla, OR 97882

 4 Bedrooms

 2.5 Bathrooms

 2,373 Sq. Ft.

 3 Car Garage

 549,997

- Interior Color Package: "Mountain Vogue". Comes with Stained Cabinets.
- Interior Walls/Trim: Walls - "Drift of Mist", Trim - "Pure White"
- Exterior Color Package: Deschutes Frost
- Light Fixtures: Acadia
- Doors: Standard Hardware. Cove knobs / Amador front door handle.
- Bathroom: Upgraded finishes in BLACK. Soaker Tub NOT included. All bathrooms. (Plumbing Fixtures, bath accessories and shower door hardware)
- Bathroom: Every Glass Shower Enclosure - Color Choice - "Obscure Glass".
- Electrical: Tech Package Pre Wire - Includes Panel, 110 outlet, 1 Dual Wall Plate (Coax & Ethernet) in Great Room
- Windows Package: Optional Windows
- Kitchen: Island Range/Hood. 30" PAINTED Cabinets. All Kitchen & Bath Cabs Painted. Sliding Window over the sink. (Premier/Origin Series)
- Cabinets: Specify Color of Knobs and Pulls
- Exterior: Concrete Flatwork (Broom Finished)
- Counters: Quartz Counters and Backsplash (6") in Kitchen
- Counters: Quartz Counters and Backsplash in Guest Bath
- Counters: Quartz Counters and Backsplash in Primary Bath
- Exterior Covered Patio: Rear - 14x10
- Electrical: Surface Mount LEDs. Add 2 for 4 total + Dimmer switch. For Primary Bedroom (N/A for Florence).
- Electrical: Surface Mount LEDs. Add 2 for 4 total per room + Dimmer switch. Choose qty & specify which rooms: Bonus Room, Loft, or Origin Series' Great Room.
- Fencing: 4' wide Walk Gate. Black "Classic", Aluminum, with Spears, 4' tall.
- Garage: Man Door (Exterior door from garage to outside). Includes: Exterior coach light, 6'-8" 2-Panel door, and 3'x3' concrete landing.
- Flooring: Great Room - Wood Laminate (Casita Court)
- Flooring: Primary Bedroom & Closet - Wood Laminate (Casita Court)
- Flooring: Bed 2 - Wood Laminate (Casita Court)
- Flooring: Bed 3 - Wood Laminate (Casita Court)
- Flooring: Bed 4 - Wood Laminate (Casita Court)
- Flooring: Bed 5/Bonus Room - Wood Laminate (Casita Court)
- Flooring: Hallway Up - Wood Laminate (Casita Court)
- Garage: Garage Door Opener
- Garage: Garage Door Opener Wireless Keypad
- Garage: Third Car Garage
- HVAC: System - Air Conditioner (Includes PreWire). *Not available for Duets.
- Garage: Insulated 3 Car Garage - Insulated Walls and Ceiling (Includes Insulated Garage Doors).
- Landscape: Backyard Landscaping. Up to a 60-ft wide lot
- Kitchen: Farm Sink - Stainless Steel Single Bowl **REQUIRES QUARTZ COUNTERTOPS**
- Kitchen or Laundry: Upgrade Faucet to Moen Arbor. SPECIFY Location(s) and Color. (Kitchen or Laundry. Black or Spot Resistant Stainless)
- Laundry Room: Add Sink Rough-In Only
- 56511 Fireplace: Electric Fireplace - Drywall Only w/ Mantle **ESTIMATED**
- 56520 Fireplace: Add Shiplap to Electric Fireplace **ESTIMATED**
- 72650 Bathroom: Freestanding Soaker Tub **ESTIMATED**
- Plumbing fixtures for primary tub. **ESTIMATED**

MonteVista
HOMES

541-833-9119

In a continual effort to improve our product, MonteVista Homes reserves the right to change product design, features, materials, floor plans, specifications, prices and terms without prior notice. Square footage stated or implied are approximate. Images may be representative of future home and show what's possible not what's included. Seller is a licensed real estate broker in the State of Oregon. CCB#203709

