

McClannahan Summit

Thielsen
LOT None

545 Taft St. Umatilla, OR 97882

4 Bedrooms

2.5 Bathrooms

2,373 Sq. Ft.

2 Car Garage

None

MODEL HOME



THIELSEN TRADITIONAL ELEVATION



The Thielsen uses its 2,373 square feet to balance generous living spaces with thoughtful flow. A main-level primary suite offers a private retreat, while an open kitchen and great room at the heart of the home create a natural center for everyday living and gatherings. Upstairs, a large bonus room expands how the home can be used for media or play, while additional bedrooms give family or guests space to unwind. With its versatile layout and meaningful transitions between spaces, the Thielsen supports a lifestyle filled with connection and comfortable rhythms.

MonteVista
HOMES

541-833-9119

In a continual effort to improve our product, MonteVista Homes reserves the right to change product design, features, materials, floor plans, specifications, prices and terms without prior notice. Square footage stated or implied are approximate. Images may be representative of future home and show what's possible not what's included. Seller is a licensed real estate broker in the State of Oregon. CCB#203709



McClannahan Summit

Thielsen
LOT None

545 Taft St. Umatilla, OR 97882

🛏 4 Bedrooms

🚿 2.5 Bathrooms

🏠 2,373 Sq. Ft.

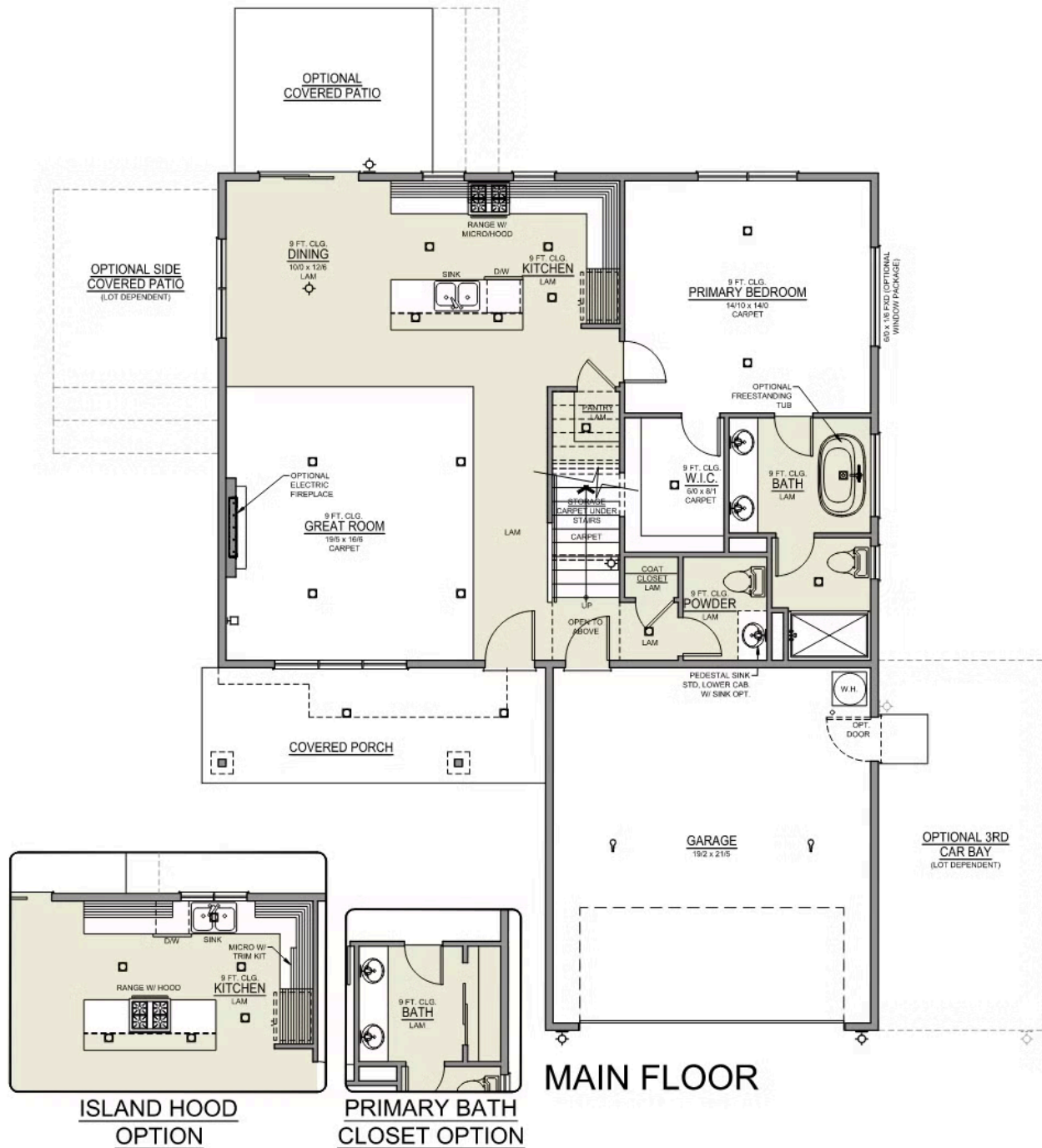
🚗 2 Car Garage

🏠 None

Thielsen 2-Car

2,373 Sq. Ft.

4 Bedroom, 3 Bath



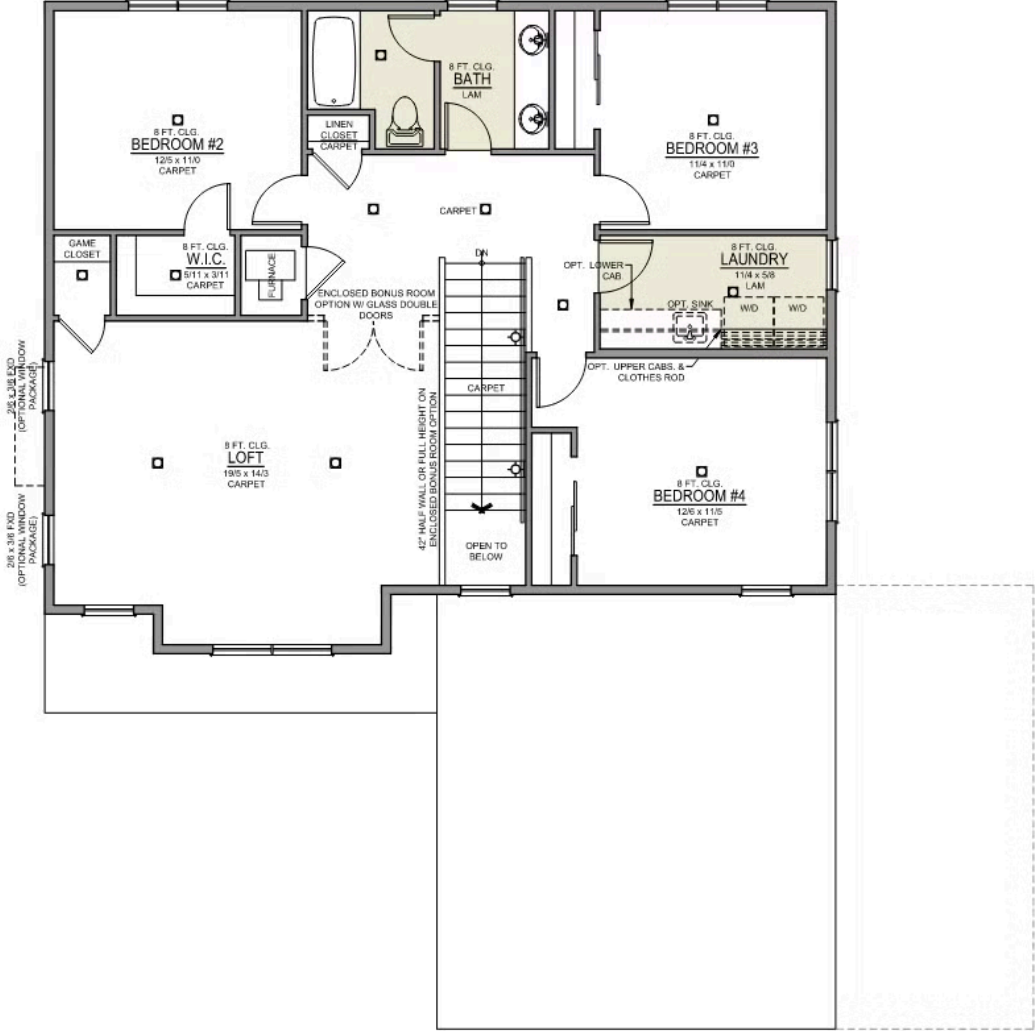
McClannahan Summit

Thielsen
LOT None

545 Taft St. Umatilla, OR 97882

4 Bedrooms 2.5 Bathrooms 2,373 Sq. Ft. 2 Car Garage None

Thielsen 2-Car
2,373 Sq. Ft.
4 Bedroom, 3 Bath



UPPER FLOOR