

Upland Meadows

Metolius Premier
LOT 15

879 NE Laurel Springs Dr Hermiston, OR 97838

4 Bedrooms 3 Bathrooms 2,095 Sq. Ft. 3 Car Garage 419,900

UNDER CONSTRUCTION



V - FARMHOUSE, 2 CAR



- Upstairs Flex Space/ Loft
- Kitchen Island with Sink
- Corner Kitchen Pantry
- Main Level Guest Suite or Office
- Great Room with Fireplace

- Primary Suite with Walk-in Closet
- Quartz Countertops throughout Home
- Stainless Steel Appliances
- 9 Foot Ceilings throughout Main Level

MonteVista
HOMES

541-403-5150

In a continual effort to improve our product, MonteVista Homes reserves the right to change product design, features, materials, floor plans, specifications, prices and terms without prior notice. Square footage stated or implied are approximate. Images may be representative of future home and show what's possible not what's included. Seller is a licensed real estate broker in the State of Oregon. CCB#203709



Upland Meadows

Metolius Premier

LOT 15

879 NE Laurel Springs Dr Hermiston, OR 97838

4 Bedrooms

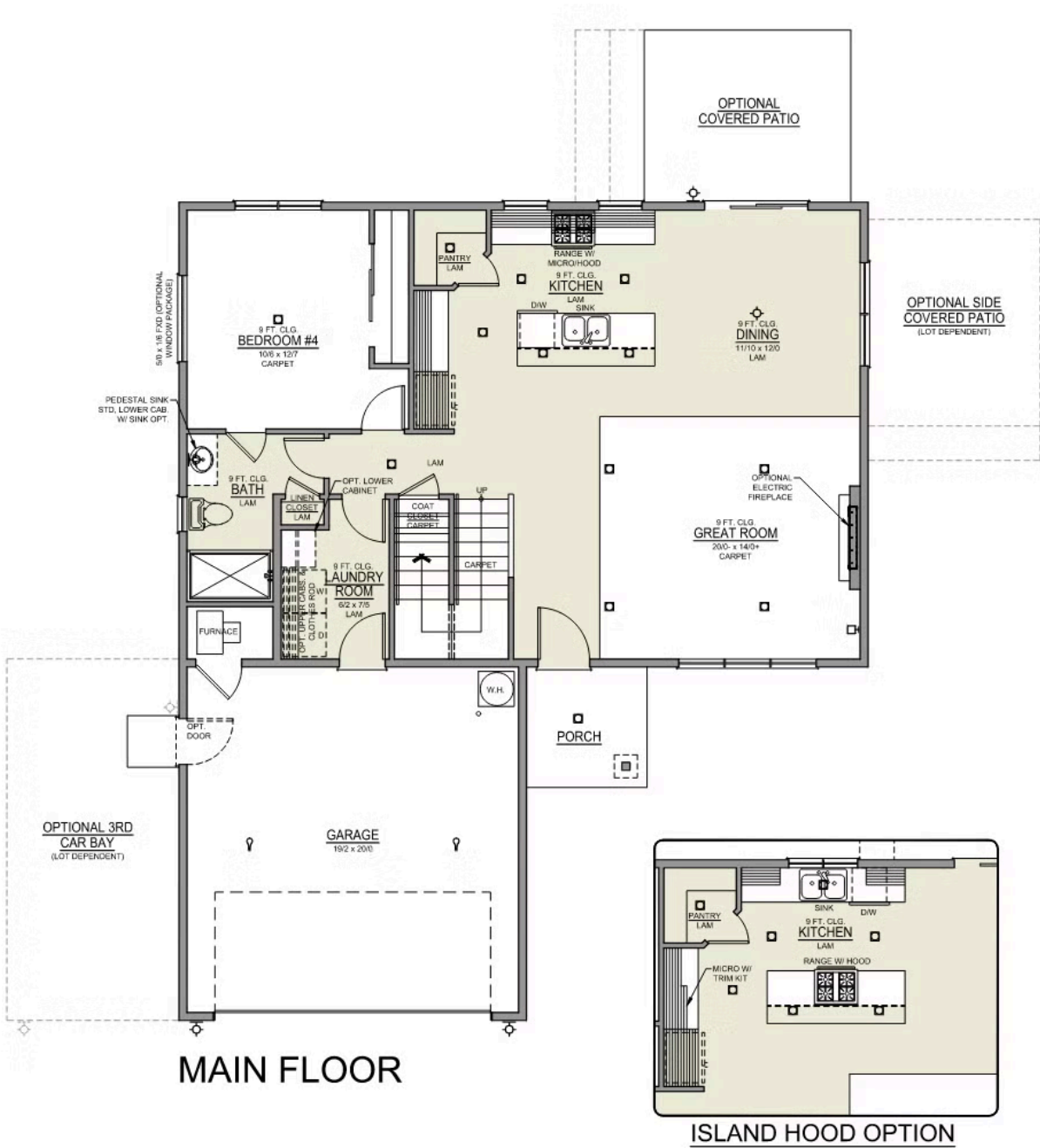
3 Bathrooms

2,095 Sq. Ft.

3 Car Garage

419,900

Metolius 2-Car
2,095 Sq. Ft.
4 Bedroom, 3 Bath



Upland Meadows

Metolius Premier

LOT 15

879 NE Laurel Springs Dr Hermiston, OR 97838

4 Bedrooms

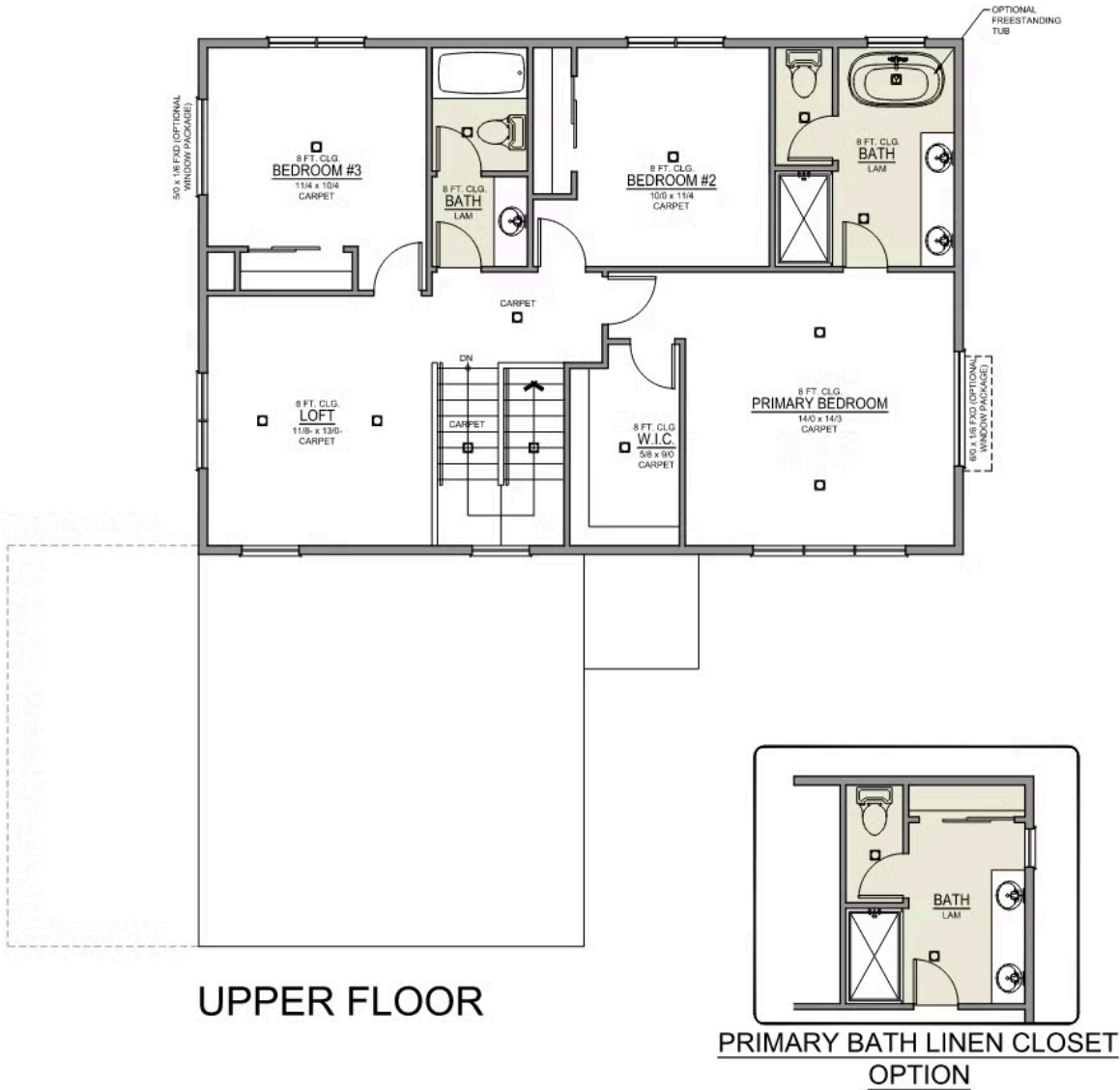
3 Bathrooms

2,095 Sq. Ft.

3 Car Garage

419,900

Metolius 2-Car
2,095 Sq. Ft.
4 Bedroom, 3 Bath



Upland Meadows

OPTIONS

Metolius Premier
LOT 15

879 NE Laurel Springs Dr Hermiston, OR 97838

 4 Bedrooms  3 Bathrooms  2,095 Sq. Ft.  3 Car Garage  419,900

- Interior Color Package: "Haven Valley". Comes with Stained Cabinets.
- Interior Walls/Trim: Walls - "Drift of Mist" , Trim - "Pure White"
- Exterior Color Package: Alpine Trail
- Light Fixtures: Acadia
- Doors: Standard Hardware. Cove knobs / Amador front door handle.
- Bathroom: Upgrade finishes to BLACK. Soaker Tub INCLUDED. All bathrooms. (Plumbing Fixtures, bath accessories and shower door hardware)
- Bathroom: Every Glass Shower Enclosure - Color Choice - "Obscure Glass".
- Electrical: Tech Package Pre Wire - Includes Panel, 110 outlet, 1 Dual Wall Plate (Coax & Ethernet) in Great Room
- Kitchen: Base House (Premier/Origin). Wall Range, 30" STAINED Cabinets (All Kitchen & Bath Cabs Stained).
- Cabinets: Specify Color of Knobs and Pulls
- Counters: Quartz Counters and Backsplash (6") in Kitchen
- Counters: Quartz Counters and Backsplash in Guest Bath
- Counters: Quartz Counters and Backsplash in Primary Bath
- Exterior Covered Patio: Rear - 12x10
- Electrical: Flush-Mount LEDs. Add 2 for 4 total + Dimmer switch. For Primary Bedroom.
- Garage: Garage Door Opener
- Garage: Garage Door Opener Wireless Keypad
- HVAC: System - Air Conditioner (Includes PreWire).
*Not available for Duets.
- Fireplace: Electric Fireplace - Drywall Only w/ Mantle
- Bathroom: Freestanding Soaker Tub

MonteVista
HOMES

541-403-5150

In a continual effort to improve our product, MonteVista Homes reserves the right to change product design, features, materials, floor plans, specifications, prices and terms without prior notice. Square footage stated or implied are approximate. Images may be representative of future home and show what's possible not what's included. Seller is a licensed real estate broker in the State of Oregon. CCB#203709

