

# Feather Ridge

Manzanita Origin  
LOT 143

3987 SW Obsidian Pl. Redmond, OR 97756

3 Bedrooms 2.5 Bathrooms 1,415 Sq. Ft. 2 Car Garage 449,997

UNDER CONSTRUCTION



L - FARMHOUSE



- Open Concept Great Room
- Stainless Steel Kitchen Appliances
- Primary Bedroom with Walk-In Closet
- Upstairs Laundry Room

- Covered Front Porch
- Luxury Wood Laminate Flooring
- Luxury Vinyl Tile in Bath and Laundry
- Attached External Storage

MonteVista  
HOMES

541-640-5225

In a continual effort to improve our product, MonteVista Homes reserves the right to change product design, features, materials, floor plans, specifications, prices and terms without prior notice. Square footage stated or implied are approximate. Images may be representative of future home and show what's possible not what's included. Seller is a licensed real estate broker in the State of Oregon. CCB#203709



3 Bedrooms

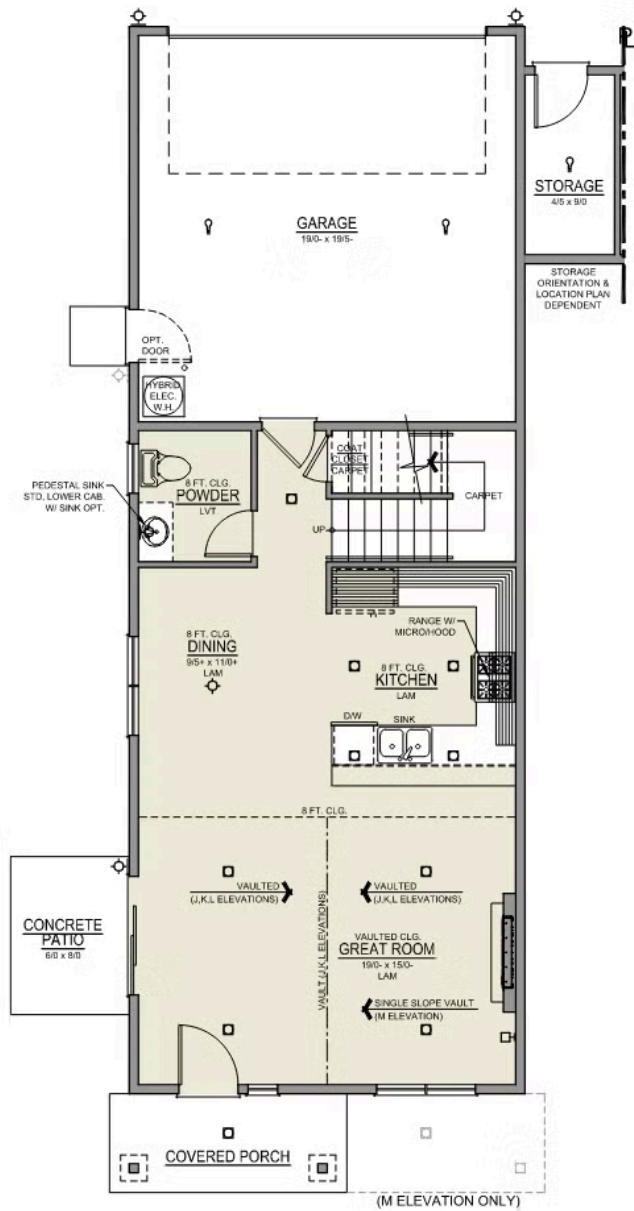
2.5 Bathrooms

1,415 Sq. Ft.

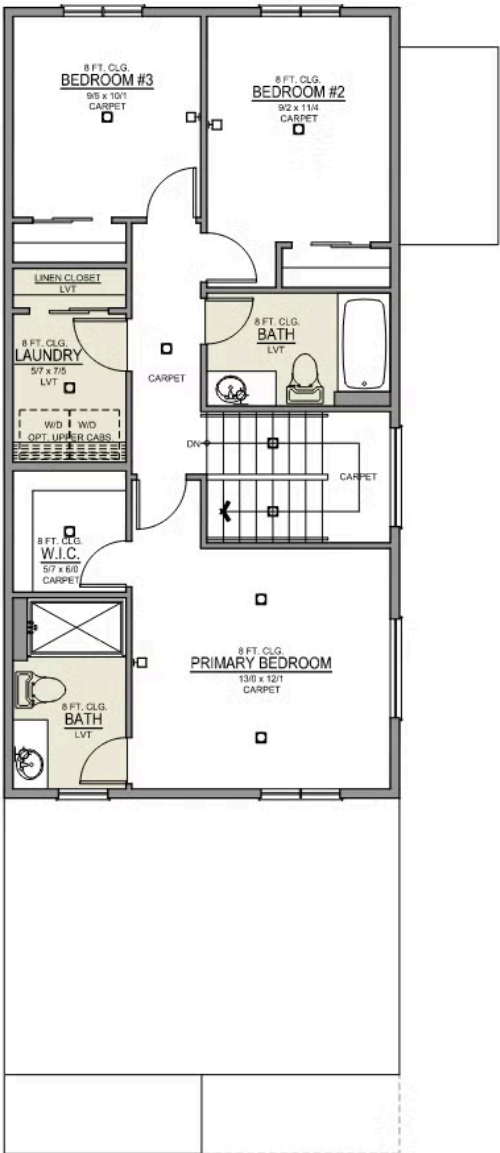
2 Car Garage

449,997

Manzanita 2-Car  
1,415 Sq. Ft.  
3 Bedroom, 2.5 Bath



MAIN FLOOR



UPPER FLOOR

# Feather Ridge

## OPTIONS

Manzanita Origin  
LOT 143

3987 SW Obsidian Pl. Redmond, OR 97756

 3 Bedrooms  2.5 Bathrooms  1,415 Sq. Ft.  2 Car Garage  449,997

- Interior Color Package: "Mountain Vogue". Comes with Stained Cabinets.
- Exterior Color Package: Alpine Trail
- Light Fixtures: Acadia
- Doors: Hardware Standard. "Cove" knobs / "Amador" front door handle.
- Bathroom: Upgraded finishes in BLACK. Soaker Tub NOT included. All bathrooms. (Plumbing Fixtures, bath accessories and shower door hardware)
- Bathroom: Shower Enclosure(s) Glass Color Choice
- Electrical: Tech Package Pre Wire - Includes Panel, 110 outlet, 1 Dual Wall Plate (Coax & Ethernet) in Great Room
- Cabinets: Specify Color of Knobs and Pulls
- Countertops: Quartz in Kitchen
- Backsplash: Quartz (6") in Kitchen.
- Counters: Quartz Counters and Backsplash in Guest Bath
- Counters: Quartz Counters and Backsplash in Primary Bath
- Electrical: Ceiling Fan - PRE-WIRE ONLY. Per Room. (For Primary Bedroom, Loft, Great Room, Bonus Room, or Covered Patio).
- Garage: Garage Door Opener
- Garage: Garage Door Opener Wireless Keypad
- HVAC: System - Ductless Heating & AC "Mini Split" (Includes Prewire).
- HVAC: Add Second Head to Ductless Heating & AC "Mini Split" System.
- Fireplace: Electric Fireplace - Drywall Only w/ Mantle
- Fireplace: Add Shiplap to Electric Fireplace Drywall. Floor-to-Ceiling.

**MonteVista**  
HOMES

**541-640-5225**

*In a continual effort to improve our product, MonteVista Homes reserves the right to change product design, features, materials, floor plans, specifications, prices and terms without prior notice. Square footage stated or implied are approximate. Images may be representative of future home and show what's possible not what's included. Seller is a licensed real estate broker in the State of Oregon. CCB#203709*

